

Agenda Item No. C-5

DATE SUBMITTED _____
 SUBMITTED BY PUBLIC SERVICES
 DATE ACTION REQUIRED 2/19/25

COUNCIL ACTION
 PUBLIC HEARING REQUIRED
 RESOLUTION
 ORDINANCE 1ST READING
 ORDINANCE 2ND READING
 CITY CLERK'S INITIALS

**IMPERIAL CITY COUNCIL
 AGENDA ITEM**

SUBJECT:	DISCUSSION/ACTION: 1. Purchase of valve exercise equipment for water treatment plant to implement state mandated valve exercise program		
DEPARTMENT INVOLVED: Public Services			
BACKGROUND/SUMMARY: The water treatment plant is in need of valve exercise equipment to implement the state mandated valve exercise program. The program will help the city ensure compliance with state regulations/requirements while also ensuring water valves are exercised on a regular basis keeping them operational and prevent them from sticking. If the valves are not exercised regularly the valves can become stuck or corroded, they will fail to open or close properly, leading to potential water supply interruptions and potential safety risks as a malfunctioning valve can lead to leaks or bursts in the service lines. The purchase of the valve exercise equipment is being requested for approval through E.H. Wachs as their equipment integrates with the Geographic Information Systems (GIS) software, Trimble Unity, purchased by the city.			
FISCAL IMPACT: \$103,976.18 Account: 50-555-5241	FINANCE INITIALS	<u>JMS</u>	
STAFF RECOMMENDATION: Approve Request	DEPT. INITIALS	<u>Jng</u>	
MANAGER'S RECOMMENDATION: <i>approve resolution</i>	CITY MANAGER'S INITIALS	<u>DHW</u>	
MOTION:			
SECONDED: AYES: NAYES: ABSENT:	APPROVED <input type="checkbox"/> DISAPPROVED <input type="checkbox"/>	REJECTED <input type="checkbox"/> DEFERRED <input type="checkbox"/>	REFERRED TO:

RESOLUTION NO. 2025-08

**RESOLUTION OF THE CITY COUNCIL OF THE CITY OF
IMPERIAL FINDING THAT SOLE SOURCE IS NECESSARY
FOR THE PURCHASE OF WACHS VALVE EXERCISE
EQUIPMEN FOR THE WATER TREATMENT PLANT**

WHEREAS, the City of Imperial operates and maintains the water treatment plant and water service lines throughout the city; and

WHEREAS, the water plant is in need of the valve exercise equipment to implement the state mandated valve exercise program. The program will help the city ensure compliance with state regulations/requirements while also ensuring water valves are exercised on a regular basis keeping them operational and prevent them from sticking; and

WHEREAS, if the valves are not exercised regularly the valves can become truck or corroded, they will fail to open or close properly, leading to potential water supply interruptions and potential safety risks as a malfunctioning valve can lead to leaks or bursts in the service lines; and

WHEREAS, the City of Imperial Department of Public Services has attempted to exercise valves manually to properly maintain health and safety of the residents of the City of Imperial; and

WHEREAS, the California Public Contract Code and City of Imperial Ordinances authorize sole source for purchase of specific brand equipment and the associated work when the product is only available from one source

WHEREAS, Section 3400 (c) includes an exception that permits local agencies to designate a material, product or service being procured by brand or trade name in certain specified circumstances, including to obtain a necessary item that is only available from one source or, when necessary, to match other products in use on a particular public improvement either completed or in the course of completion; and

WHEREAS, the common law recognizes a bidding exception for circumstances where competitive bidding of public contracts otherwise required by statute may be excused, including circumstances where the contract is such that competitive proposals would be unavailing or would not produce an advantage, and the advertisement for competitive bid would thus be undesirable, impractical, or impossible (*Graydon v. Pasadena Redevelopment Agency* (1980) 104 CA3d 631); and

WHEREAS, the purchase of the valve exercise equipment is necessary through E.H. Wachs as their equipment integrates with the Geographic Information Systems (GIS) software, Trimble Unity, purchased by the city; and

WHEREAS, the above-described conditions justify the purchase and associated work without formal bidding and without multiple quotes; and

WHEREAS, the City Council wishes to approve sole source procurement and associated work and authorize the City Manager to take all necessary action to complete this work.

NOW, THEREFORE, THE CITY OF IMPERIAL COUNCIL FINDS AS FOLLOWS:

1. The above-referenced recitals are true and correct; and
2. Residents of the City of Imperial utilize water treatment plant services; and
3. Based on substantial evidence that shall be set forth in the minutes of this meeting, that there is justification to sole source the purchase of this equipment and not receive competitive bids for the associated work and that the action is necessary to enter into this contract.

NOW, THEREFORE, BE IT RESOLVED AS FOLLOWS:

1. The above-referenced recitals are true and correct and are incorporated herein.
2. The City Council declares that the public interest and necessity demands utilization of sole source for purchase of this product and associated work.
3. The City Council authorizes the City Manager to execute all necessary documents to acquire and install the necessary equipment.

APPROVED, PASSED AND ADOPTED, at the regular meeting of the City Council this 19th day of February, 2025.

JAMES TUCKER,
Mayor

ATTEST:

KRISTINA SHIELDS,
City Clerk

I, Kristina Shields, City Clerk of the City of Imperial, California, hereby certify that the foregoing Resolution No. 2025-08 was duly adopted at a meeting of the Imperial City Council at its meeting held on the 19th day of February 2025 by the following vote:

AYES:

NOES:

ABSENT:

ABSTAIN:

IN WITNESS WHEREOF, I have hereunto set my hand and affixed the official seal of the City of Imperial, California, on February 19, 2025.

KRISTINA SHIELDS,
City Clerk



600 Knightsbridge Parkway, Lincolnshire, Illinois 60069
 (847) 537-8800 | Fax (847) 520-1147
 turnvalves.com

Quotation

Page 1 of 2

TO: **Robert Emmett**
 City of Imperial
 420 South Imperial Avenue
 Imperial, CA 92251

Date: 2/10/25
 Quotation Number: KK226118
 Payment Terms: Net 30
 Shipping Terms: FCA Origin
 Valid Through: 3/17/2025
 Estimated Ship Date: 8 Weeks ARO

E.H. Wachs is pleased to offer the following quotation.

Item Number	Description	Qty	U/M	Unit Price (USD)	Disc%	Line Total (USD)
1	77-000-36 Standard LX (Gas) – VMT (RH): Single turner valve maintenance trailer; includes Wachs 750 Ft/lb (1020 Nm) Extended Reach Valve operator for those preventive maintenance activities, telescoping valve key and Wachs ruggedized TC-100 with GPS controller/datalogger. A 27 HP (20 kW) gasoline powered Kohler overhead cam air cooled engine provides ample power for all contained functions, including an auxiliary HTMA Class II circuit; 10 gallon (38 L) reservoir, fan cooled heat exchanger, continuous duty rated for 8 GPM (30.3 LPM) @ 2,000 PSI (140 bar). A positive displacement blower provides 500 CFM (14.2 cmm)-11" (280mm) Hg vacuum, with spoils containment provided by a 250 (950 L) gallon tank with power hydraulic dump (rear discharge) and latching rear door. Also driven from the common power train is a 2.5 GPM (9.5 LPM) @ 3000 PSI (210 bar) pressure washer system with 3 gallon (11.4 L) anti-freeze tank and 95 gallon (360 L) water tank. Includes 2-1/2" (63.5mm), 1-1/4" (31.75mm) & 7/8" (22mm) suction wands and one each short and long wash-down guns. The LX package bundles the service light bar with arrow board, 45' (14 M) auxiliary hydraulic hose reel for operation of hydraulic power tools & Bluetooth tethering module (installed in ERV-750) for wireless communication between the exerciser and Controller/Data Logger and 24" (61cm) X 18" (46cm) x 18" (46cm) aluminum job box.	1	EA	88,750.00		88,750.00
2	79-430-20 Field training - 1 day program. Training topics range from field operation of the mechanical systems like hydro-excavation and Valve operator; to training of computerized controllers and preventive maintenance software like VITALS. Field crews and participants will be shown, in detail, standard procedures for safe and efficient operation and use of valve maintenance tools.	1	EA	2,495.00	100.0%	0.00
3	77-411-00 Spare Tire Kit for VMTs, includes wheel assembly and underdeck tire hoist.	1	EA	1,195.00		1,195.00
4	SALES TAX Sales Tax 7.75%	1	EA	7,384.98		7,384.98
5	DELIVERY Pool Delivery Rate (Per Mile) with a minimum of 300 miles. Rate calculated is 2014.00 MILE from Licolnshire, Il to 420 s. Imperial Ave, Imperial, Ca. 2014 Miles per Google maps			3.30		6,646.20
Total (USD)						\$103,976.18

Thank you for the opportunity to quote your application needs. If you have any questions or if I may be of any further assistance to you please do not hesitate to notify me. I'm here to help!

SHIPPING IS ESTIMATED

(SALES TAX!!!!) We collect sales tax in all but the following states: AK, DE, MT, OR and NH. If you are tax exempt please supply your identification number and certificate with your order. If your exempt number is not on file, tax will be added to your order. We will prepay and add shipping charges to your order, or we can ship collect via your choice of carrier service.

Please reference this quote number when placing your order.
 Thank You and best regards,

Kenny Koch
 Southwest Regional Account Manager
 909-380-4816
 kkoch@ehwachs.com



600 Knightsbridge Parkway, Lincolnshire, Illinois 60069
(847) 537-8800 | Fax (847) 520-1147
turnvalves.com

Quotation

Page 2 of 2

TO: **Robert Emmett**

Date: 11/18/2024
Quotation Number: KK226118

Sales of E.H. Wachs products and services are expressly limited to and made conditional on acceptance of its current Terms and Conditions of Sale, found at ehwachs.com ("Terms"). Any additional or different terms are hereby rejected. Commencement of work by E.H. Wachs or acceptance of delivery of products by you constitutes your acceptance of the Terms.

Implementing a Valve Exercise Program

One of the tasks often left undone by water or wastewater utility operators is exercising mainline valves, including valves on fire hydrants. Regular valve exercising is an industry-standard recommendation to help maintain the valves' useful life, safety, and operation.

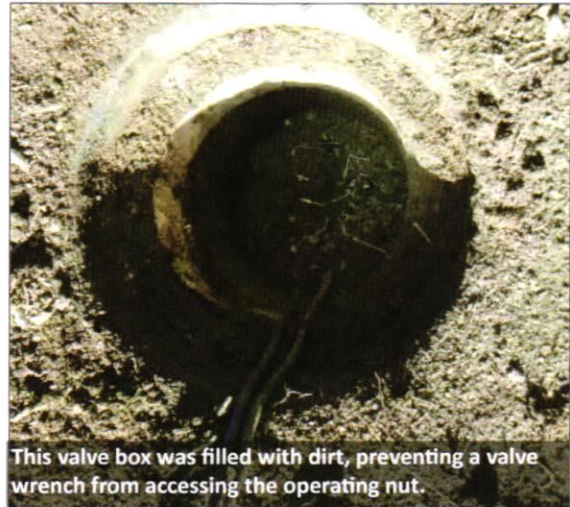
But it takes time and discipline to make sure that all valves are operated at least annually. This is especially true for cities or rural water districts that have only one or two operators. It takes time to exercise every valve in the water or wastewater system. The task in cities is somewhat easier to accomplish because the valves are in closer proximity than in a sprawling rural water district. But there may be hundreds of valves to turn.

Establishing a valve exercise program

A valve exercising program should be set up and completed annually by water and wastewater system. By exercising valves on a regular basis, operators can help make sure that the valves will operate when they're needed for a repair on that section of line, to shut off water to a delinquent customer or to turn off the water to a broken line. Not being able to shut down a section of pipe only hinders the repairs. In some cases, when Kansas Rural Water Association staff have been trying to help water systems, we find it's only the valve at the storage tank that operates. That means that to repair a 4-inch pipe anywhere in town, the entire system likely loses pressure which can result in the system needing to impose a boil water advisory.

Water and wastewater systems should establish and follow a regular valve exercising program. Any problems noted during the program should be documented and timely repairs should be made. It's critical to have operable valves that can isolate sections of the system.

KRWA recently acquired a valve exercising trailer to help cities and rural water districts that want help in



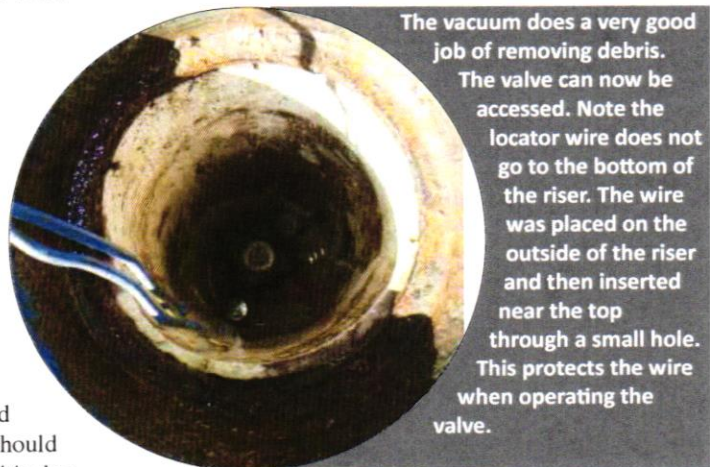
This valve box was filled with dirt, preventing a valve wrench from accessing the operating nut.

exercising their valves. KRWA staff have been extremely successful in restoring many valves thought to be irreparable back to full function. KRWA's valve exerciser trailer also has a vacuum and power washer to clean out the valve riser boxes or meter pits that have filled with dirt.

As one example of the use of the valve exerciser, in December 2020 and



KRWA Circuit Rider Greg Metz and Onaga Superintendent Lynn Krohn use the power washer and vacuum to remove the debris from a valve riser.



The vacuum does a very good job of removing debris. The valve can now be accessed. Note the locator wire does not go to the bottom of the riser. The wire was placed on the outside of the riser and then inserted near the top through a small hole. This protects the wire when operating the valve.

January 2021, KRWA assisted the city of Onaga in Pottawatomie with exercising their mainline valves. KRWA Circuit Rider Greg Metz had already helped with operating ninety

Valve Exercising Program Guidance

The American Waterworks Association (AWWA) provides guidance in AWWA Manual M44 as well as suggesting manufacturers' recommendations for valve exercising procedures. The guidance suggests the program includes at least the following elements:

- 1) A goal for the number of transmission valves to be exercised annually based on the percentage of the total valves in the system.
- 2) A goal for the number of distribution valves to be exercised annually.
- 3) A goal that 100% of the valves are tested within a certain time frame.
- 4) Measures to verify that the goals are met and written procedures for action if the goals are not attained.
- 5) Critical valves in the distribution system shall be identified for exercising on a regular basis. Potential water quality and isolation concerns shall be recognized. The program shall track the annual results and set goals to reduce the percent of inoperable valves.
- 6) The valve-exercising program may be implemented in conjunction with the systematic flushing program.
- 7) A goal of replacing the inoperable valves identified during the operation and maintenance process shall be established as part of the exercising program.

Determining which valves are critical

- Transmission mains affecting service to large groups of customers
- Distribution valves necessary to maintain service to critical customers such as: hospitals, dialysis centers, nursing homes, medical facilities, manufacturing facilities, downtown/high density areas, and service connections where loss of flow could impact human health due to catastrophic events (Waste water treatment plant critical processes or loss of cooling water to processes where it is critical)
- Areas prone to main breaks
- Areas of infrastructure approaching the end of its useful life
- Areas around road or other utility re-construction areas

Frequency of exercising

- Critical valves - annually
- Non-critical valves:
 - Rate of deterioration known to occur in the distribution system. Systems should operate a representative sample annually to determine rate of deterioration
 - Consequence of failure or delays in being able to close the valve



(90) valves on the mainline and the fire hydrants on the east side of town. Another sixty-six (66) valves were exercised on January 12. Many of the valve boxes had dirt in them that prevented a valve wrench from accessing the nut. In one case, a valve riser had tilted and was nearly at a 45-degree angle. The valve was on a fire line to a building. A valve wrench would not access the operating nut. Normally to fix such a problem would require excavating around the valve

riser by hand or by using a backhoe. That process may take two hours. But with the valve exercise machine on site, the city operators removed the sod from around the riser and then using the power washer and vacuum from the KRWA trailer, the dirt was removed from the backside of the riser, the riser was then straightened and backfill was compacted around the riser. This required only about ten minutes. And there was very little disturbance to the house yard where the valve riser was located.

To be efficient, system operators should have the valve located and be accessible before KRWA arrives with

the exercise / vac trailer. KRWA charges a nominal fee of \$25 per hour for the exerciser. If you are interested in having KRWA assist with exercising call the KRWA office at 785-336-3760 or Greg Metz at 785-541-0342 to discuss the work.

the exercise / vac trailer. KRWA charges a nominal fee of \$25 per hour for the exerciser.

If you are interested in having KRWA assist with exercising call the KRWA office at 785-336-3760 or Greg Metz at 785-541-0342 to discuss the work.

Greg Duryea started work for KRWA in 1993 as Technical Assistant. He holds a Class 1 water certification and is the certified operator for Sycamore Springs Resort in Brown County. Greg announced semi-retirement from KRWA effective January 15, 2021.



1-800-327-9761 (except FL) TEL (772) 288-4854
E-mail: regal@regalchlorinators.com FAX (772) 287-3238

REGAL™
GAS CHLORINATOR

Your TRUSTED Selection for Water Disinfection

chlorinators incorporated

1044 S.E. Dixie Cutoff Road, Stuart, FL 34994 USA
www.regalchlorinators.com

ONLY 68 PARTS IN OUR CHLORINATOR