


Agenda Item No. D-6

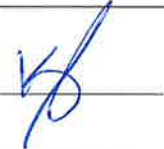


DATE SUBMITTED 5/29/2019

SUBMITTED BY COMMUNITY DEVELOPMENT DIRECTOR

DATE ACTION REQUIRED 6/5/2019

COUNCIL ACTION (x)
 PUBLIC HEARING REQUIRED ()
 RESOLUTION ()
 ORDINANCE 1ST READING ()
 ORDINANCE 2ND READING ()
 CITY CLERK'S INITIALS 

**IMPERIAL CITY COUNCIL
 AGENDA ITEM**

SUBJECT: DISCUSSION/ACTION: LABOR COMPLIANCE SERVICES 1. Award Labor Compliance services to Legion Consulting for the Aten Boulevard Sidewalk Project - Phase 2 from La Brucherie Road to Shiloh Road.	
DEPARTMENT INVOLVED: COMMUNITY DEVELOPMENT DEPARTMENT	
BACKGROUND/SUMMARY: The City has secured funds through LTA Measure D for the Aten Boulevard Sidewalk Project Phase 2 from LaBrucherie Road to Shiloh Road project. Staff released request for proposals to known labor consulting businesses in the Imperial Valley and Southern California Regions. The following three companies submitted proposals for labor compliance services: 1. Legion Consulting - \$2,740 2. Labor Compliance Consultants - \$6,500 3. Padilla & Associates - \$9,681.64 After carefully reviewing all proposals, Legion Consulting seems to be the most advantageous to the city, therefore staff is recommending labor compliance be awarded to them.	
FISCAL IMPACT: \$2,740 LTA Measure D	ADMIN SERVICES SIGN INITIALS 
STAFF RECOMMENDATION: Staff recommends City Council award labor compliance services to Legion Consulting.	DEPT. INITIALS 
MANAGER'S RECOMMENDATION:	CITY MANAGER'S INITIALS 
MOTION: SECONDED: AYES: NAYES: ABSENT:	
APPROVED () DISAPPROVED () REFERRED TO:	REJECTED () DEFERRED ()



Bid Opening Act

RFP No 2019-02

Labor Compliance Services

Aten Boulevard Sidewalk Project – Phase 2
From LaBrucherie Road to Shiloh Road

Bids received by: Debra Jackson

Were opened at 4:00 pm on 4/8/19

By: Debra Jackson

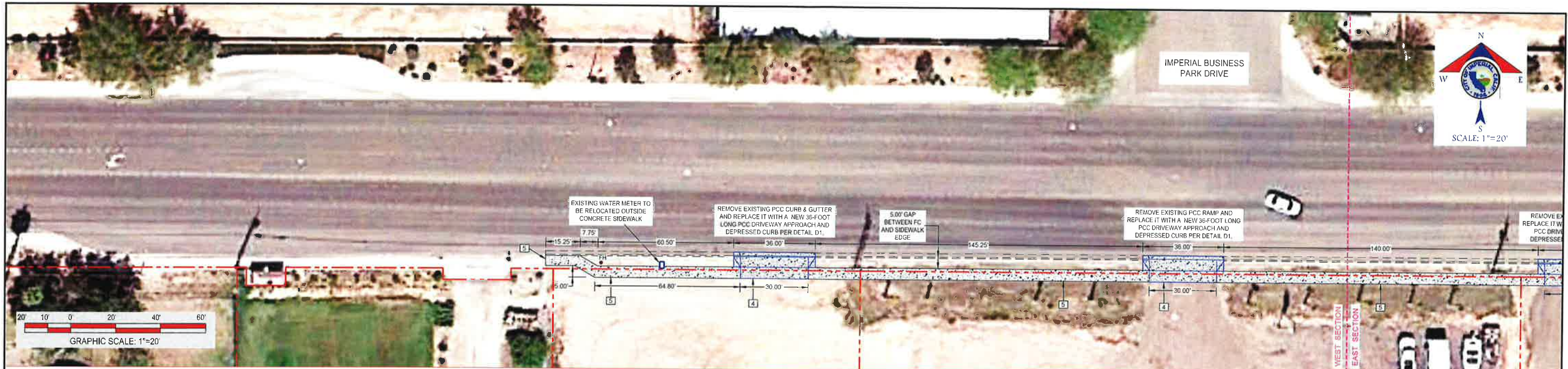
Witnessed by: Isam Alvarez Signature Isam Alvarez

COMPANY	BID AMOUNT	BID BOND
<u>Legion Consulting</u>	<u>2,740.00</u>	
<u>Labor Compliance Consultants</u>	<u>6,500.00</u>	
<u>Padilla & Associates</u>	<u>9,681.64</u>	
_____	_____	
_____	_____	_____
_____	_____	_____

BIDS WERE GIVEN TO Othon Mora FOR STUDY AND RECOMMENDATION TO CITY COUNCIL.

DEBRA JACKSON, CITY CLECK

4/8/19
DATE



KEYNOTES

- 1 INSTALL HANDICAP RAMP PER DETAIL D2 (SOUTHWEST CORNER OF LaBRUCHERIE RD & ATEN BLVD INTERSECTION)
- 2 INSTALL PCC CURB AND GUTTER PER DETAIL D5 (CITY STD., DET., NO. 21),
- 3 INSTALL PCC ATTACHED SIDEWALK PER DETAIL D6 (CITY STD., DET., NO. 25),
- 4 INSTALL PCC DRIVEWAY APPROACH PER DETAIL D1
- 5 INSTALL PCC DETACHED SIDEWALK PER DETAIL D3
- 6 INSTALL HANDICAP RAMP PER DETAIL D4 (NORTHWEST CORNER OF LaBRUCHERIE RD & ATEN BLVD INTERSECTION), INCLUDES REMOVAL AND DISPOSAL OF EXISTING HANDICAP RAMP/CURB & GUTTER,
- 7 INSTALL PCC DRIVEWAY APPROACH PER DETAIL D7 (CITY STD., DET., NO. 22),
- 8 INSTALL PEDESTRIAN PUSH BUTTON SYSTEM TYPE "B" PER CALTRANS 2015 STANDARD PLAN ES-SC. THIS CONCEPT INCLUDES PUSH-BUTTONS, PEDESTRIAN SIGNAL HOUSINGS, WIRING, AND ALL NECESSARY APPURTENANCES FOR PROPER OPERATION, ALSO INCLUDES PUSH BUTTON ASSEMBLY POST PER CALTRANS 2015 STANDARD PLAN RSP ES-7A.



NO.	REVISIONS:	APPROVED	DATE

UNAUTHORIZED CHANGES & USES: The engineer preparing these plans will not be responsible for, or liable for, unauthorized changes to or uses of these plans. All changes to the plans must be in writing and must be approved by the preparer of these plans.



CITY OF IMPERIAL

420 South Imperial Avenue
Imperial, CA 92251
Ph: (760) 355-3840 • Fax: (760)355-4718

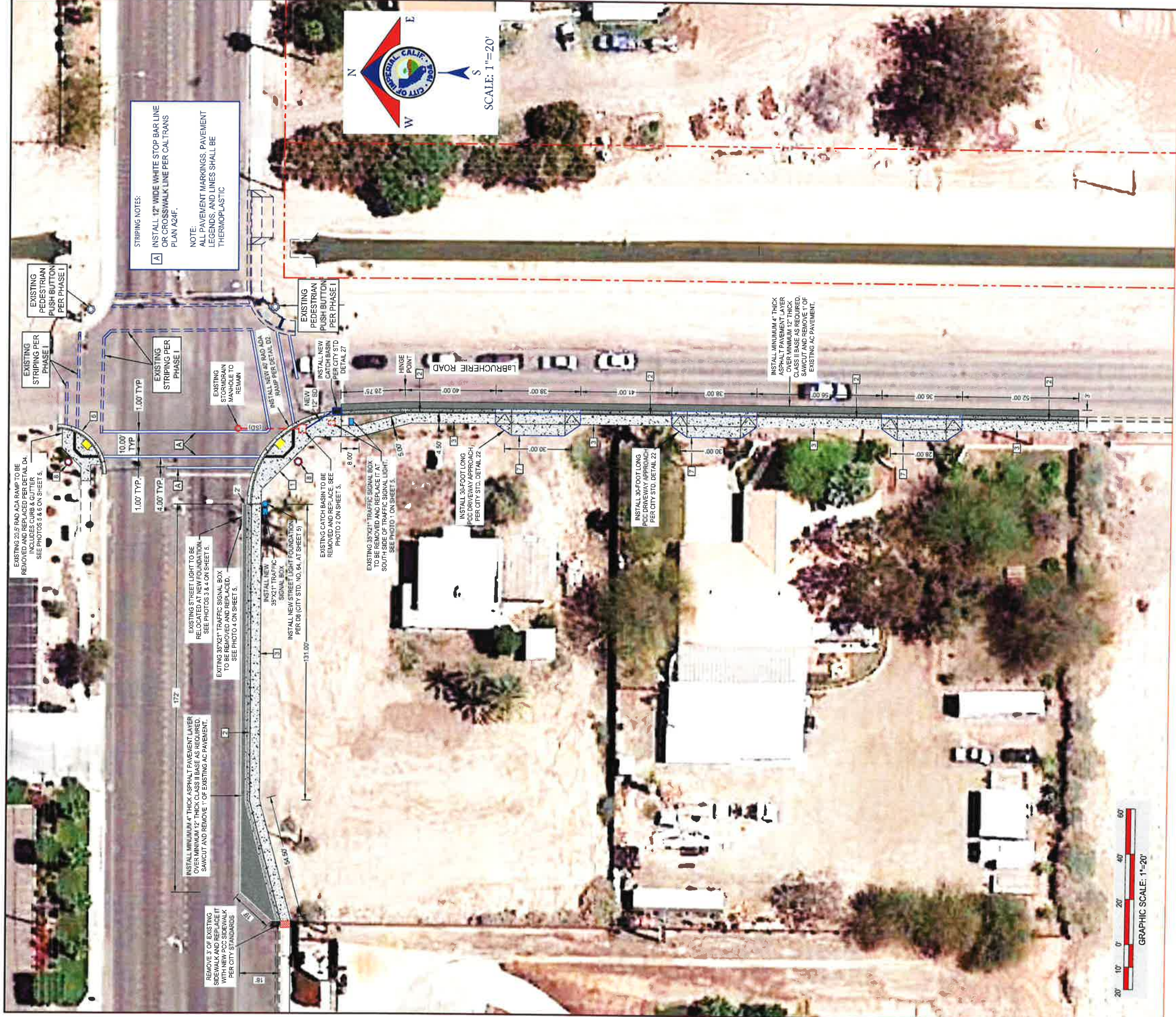
COMMUNITY DEVELOPMENT DEPARTMENT

SITE PLAN - ATEN BLVD.

**ATEN BOULEVARD SIDEWALK PROJECT
PHASE 2
FROM LaBRUCHERIE ROAD TO SHILOH ROAD**

DATE: 08/13/2018

SHEET **3**
OF **5** SHEETS



STRIPING NOTES:
 [A] INSTALL 12" WIDE WHITE STOP BAR LINE OR CROSSWALK LINE PER CALTRANS PLAN A24F.
 NOTE:
 ALL PAVEMENT MARKINGS, PAVEMENT LEGENDS, AND LINES SHALL BE THERMOPLASTIC



KEYNOTES

- 1 INSTALL HANDICAP RAMP PER DETAIL D2 (SOUTH-WEST CORNER OF LABRUCHERIE RD & ATEN BLVD INTERSECTION)
- 2 INSTALL PCC CURB AND GUTTER PER DETAIL D5 (CITY STD. DET. NO. 21).
- 3 INSTALL PCC ATTACHED SIDEWALK PER DETAIL D6 (CITY STD. DET. NO. 25).
- 4 INSTALL PCC DRIVEWAY APPROACH PER DETAIL D1
- 5 INSTALL PCC DETACHED SIDEWALK PER DETAIL D3
- 6 INSTALL HANDICAP RAMP PER DETAIL D4 (NORTH-WEST CORNER OF LABRUCHERIE RD & ATEN BLVD INTERSECTION). INCLUDES REMOVAL AND DISPOSAL OF EXISTING HANDICAP RAMP/CURB & GUTTER
- 7 INSTALL PCC DRIVEWAY APPROACH PER DETAIL D7 (CITY STD. DET. NO. 22).
- 8 INSTALL PEDESTRIAN PUSH BUTTON SYSTEM TYPE 'B' PER CALTRANS 2015 STANDARD PLAN ES-5C. THIS CONCEPT INCLUDES PUSH-BUTTONS, PEDESTRIAN SIGNAL HOUSINGS, WIRING, AND ALL NECESSARY APPURTENANCES FOR PROPER OPERATION. ALSO INCLUDES PUSH BUTTON ASSEMBLY POST PER CALTRANS 2015 STANDARD PLAN RSP ES-7A.

NO.	REVISIONS:	APPROVED	DATE

UNAUTHORIZED CHANGES & USES: The engineer preparing these plans will not be responsible for, or liable for, unauthorized changes to or uses of these plans. Any such changes or uses must be in writing and must be approved by the preparer of these plans.

CITY OF IMPERIAL

420 South Imperial Avenue
 Imperial, CA 92251
 Ph: (760) 355-3840 • Fax: (760)355-4718



COMMUNITY DEVELOPMENT DEPARTMENT

SITE PLAN - LaBRUCHERIE RD
 ATEN BOULEVARD SIDEWALK PROJECT
 PHASE 2
 FROM LABRUCHERIE ROAD TO SHILOH ROAD

DATE: 08/13/2018

SHEET **2**

OF **5** SHEETS