



|                                   |     |
|-----------------------------------|-----|
| COUNCIL ACTION                    | (X) |
| PUBLIC HEARING REQUIRED           | ( ) |
| RESOLUTION                        | ( ) |
| ORDINANCE 1 <sup>ST</sup> READING | ( ) |
| ORDINANCE 2 <sup>ND</sup> READING | ( ) |
| CITY CLERK'S INITIALS             | ( ) |

# IMPERIAL CITY COUNCIL AGENDA ITEM

|   |  |   |   |
|---|--|---|---|
| SUBJECT:  |  | DISCUSSION/ACTION:  |   |
|   |  | 1. Purchase of Gorman Rupp Package System for Claypool Lift Station |   |
| DEPARTMENT INVOLVED: Public Services  |  |   |   |
| BACKGROUND/SUMMARY:   |  |   |   |
| <p>To meet the growing sewage flow requirements and to allow for the continued growth of the City's southwest area, the collection system along Aten Blvd and Hwy 86 is increasing to a 21-inch line. Additionally, the Claypool lift station wet well will be increased in size to meet the new line's flow demand. Once the conveyance system is complete and in place, increased pumping volume will be required to convey the sewer through the existing force main sewer line to its discharge point near P St and Rosarito Dr.</p> <p>The purchase of this lift station package will provide the City with the necessary equipment for current and future anticipated sewer flow. Gorman Rupp has provided reliable pumping equipment to the City for decades, and staff is familiar with these pumps, as there are other installations throughout the collection system and wastewater treatment plant. As a result, many spare parts are already on hand, and maintenance procedures are established.</p> |  |   |   |
| FISCAL IMPACT:  |  | FINANCE INITIALS  |   |
| \$224,031.00  |  |   |   |
| Funds will be expended from Wastewater Enterprise Funds through account 54-848-5210. Project is in the FY 25-26 Capital Improvement Plan (CIP)  |  |   |   |
| STAFF RECOMMENDATION:   |  | DEPT. INITIALS  |   |
| Approve Request   |  |   |  |
| MANAGER'S RECOMMENDATION:   |  | CITY MANAGER'S INITIALS   |   |
|    |  |   |  |
| MOTION:   |  |   |   |
| SECONDED:   |  | APPROVED  | ( )   |
| AYES:   |  | DISAPPROVED   | ( )   |
| NAYES:  |  | REFERRED TO:  |   |
| ABSENT:   |  | REJECTED  | ( )   |
|   |  | DEFERRED  | ( )   |



USA

## GORMAN-RUPP PUMP STATION QUOTATION

## Q001792-2

Quotation Date: 06/04/2025  
Expiration Date: 06/23/2025  
Project: CITY OF IMPERIAL LS REPLACE  
N/A, CA

Local Rep: Nathan Maldonado Sales Engineer  
Environmental Water Solutions, Inc - McKenna Engineering  
13720 Cimarron Ave  
Gardena, California 90249  
Office: (310) 997-4645  
Fax: (310) 763-7950  
Cell: (310) 749-1893

Gorman-Rupp Contact: Ryan Roseberry  
Sales Application Engineer  
Office: (419) 755-1564  
Cell: (419) 564-1853  
ryan.roseberry@gormanrupp.com

## STATION INFORMATION

## GENERAL DATA

NOTE: PUMPS CHANGED FROM T8 TO T6  
PIPING CHANGED FROM 8" TO 6"  
30HP CHANGED TO 20HP

|                  |              |
|------------------|--------------|
| Application Type | Lift Station |
| Station Type     | A            |
| Voltage          | 3/60/480     |

## PUMPS AND OPTIONS

## PUMP(S)

|                  |                           |
|------------------|---------------------------|
| Pump Model       | Quantity (2), T6A3S-B /WW |
| Design Condition | 1250 GPM @ 45 Feet TDH    |
| Reprime Lift     | 15 Feet                   |
| Horsepower       | 20 HP                     |

## PUMP OPTIONS

|                 |                              |
|-----------------|------------------------------|
| Spare Parts Kit | Quantity (1) For T6A3S-B /WW |
|-----------------|------------------------------|

## MOTOR DATA

### MOTOR OPTIONS

|                      |  |
|----------------------|--|
| Motor Enclosure Type | 256T - 20 HP Motor(s) Shall Be Supplied With TEFC Enclosures |
|----------------------|--|

## STATION PIPING

### SUCTION PIPING

|              |  |
|--------------|--|
| Suction Size | 6" Flanged Elbow For Customer Connection |
|--------------|--|

### DISCHARGE PIPING

|                     |   |
|---------------------|---|
| Check Valve         | 6" Lever & Spring Check Valve   |
| Customer Connection | 6" Connection. Location to be Center (As viewed from the shaft end of the pump) |

|                                |                                       |
|--------------------------------|---------------------------------------|
| Discharge Isolation Valve Type | 2-Way Plug Valve, with Lever Actuator |
|--------------------------------|---------------------------------------|

### AIR RELEASE VALVE(S)

|                        |                                      |
|------------------------|--------------------------------------|
| Air Release Valve Type | GRP33-07 Automatic Air Release Valve |
|------------------------|--------------------------------------|

|                    |               |
|--------------------|---------------|
| ARV Isolation Type | Ball Valve(s) |
|--------------------|---------------|

|                       |         |
|-----------------------|---------|
| Static Discharge Head | 40 Feet |
|-----------------------|---------|

### PIPING OPTIONS

|                    |                            |
|--------------------|----------------------------|
| Gauge Panel Kit(s) | Quantity (2), Range 0-140' |
|--------------------|----------------------------|

### DISCHARGE BYPASS PIPING

|                  |                                     |
|------------------|-------------------------------------|
| Discharge Bypass | 6" Plug valve and 6" OPW Connection |
|------------------|-------------------------------------|

## CONTROL PANEL

### ENCLOSURE

|                            |                                      |
|----------------------------|--------------------------------------|
| Control Panel Rating       | NEMA 1 304 Stainless Steel Enclosure |
| Panel Size/Shipment Method | 36x30x12 Panel To Be Mounted & Wired |

|                          |   |
|--------------------------|---|
| Main Incoming Connection | Main Lug For Incoming Connection, Rated for 10kA SCCR |
|--------------------------|---|

### TRANSFORMER(S)

|                      |  |
|----------------------|--|
| External Transformer | A 3KVA power transformer will be supplied for 120V single phase loads. |
|----------------------|--|

### PRIMARY MOTOR STARTER

|                            |                  |
|----------------------------|------------------|
| Primary Motor Starter Type | AB NEMA 509 FVNR |
|----------------------------|------------------|

### PRIMARY CONTROL SYSTEM

|                    |                     |
|--------------------|---------------------|
| Primary Controller | Integrinex Standard |
|--------------------|---------------------|

|                |             |
|----------------|-------------|
| Primary Sensor | Air Bubbler |
|----------------|-------------|

### BACKUP CONTROL SYSTEM

|                   |                           |
|-------------------|---------------------------|
| Backup Controller | Smart Relay [Eaton Easy4] |
|-------------------|---------------------------|

|               |                           |
|---------------|---------------------------|
| Backup Sensor | Float Controls (Non-I.S.) |
|---------------|---------------------------|

|                        |   |
|------------------------|---|
| Backup Floats Quantity | Quantity (2) Floats Provided For Redundant Control Of The Pump(s) |
|------------------------|---|

|                 |                              |
|-----------------|------------------------------|
| Backup Float #1 | Low Level Float / Pumps Stop |
|-----------------|------------------------------|

|                 |                               |
|-----------------|-------------------------------|
| Backup Float #2 | High Level Float / Pump Start |
|-----------------|-------------------------------|

|             |                      |
|-------------|----------------------|
| Float Chain | 30 Feet of SST Chain |
|-------------|----------------------|

**CONTROL PANEL OPTIONS**

|                    |                                  |
|--------------------|----------------------------------|
| UL / C.S.A Listing | U.L. Listed (Control Panel Only) |
|--------------------|----------------------------------|

|                      |  |
|----------------------|--|
| Control Panel Heater | A Panel Heater Will Be Supplied To Reduce Humidity Within The Control Panel. |
|----------------------|--|

|                                       |   |
|---------------------------------------|---|
| Control Panel Surge Protective Device | A Type 2 SPD Will Be Furnished To Provide Protection From Overvoltage Surges. |
|---------------------------------------|---|

|                          |   |
|--------------------------|---|
| Voltage Alert Indication | A Detector Display Shall Be Provided To Display Voltage Status Within The Panel |
|--------------------------|---|

**ALARMS**

|                     |                                  |
|---------------------|----------------------------------|
| Alarm Light Flasher | LED Alarm Light Flasher Included |
|---------------------|----------------------------------|

|             |  |
|-------------|--|
| Alarm Light | Weatherproof LED Light, Mounted By Gorman-Rupp |
|-------------|--|

**INPUTS AND OUTPUTS**

|                          |  |
|--------------------------|--|
| External Source Contacts | The Following Digital Contact(s) Will Be Wired To Terminal Blocks For Customer Connection: |
|--------------------------|--|

|                          |  |
|--------------------------|--|
| External Source Contacts | <ol style="list-style-type: none"><li>1. Pump #1 Fault</li><li>2. Pump #2 Fault</li><li>3. High Water Alarm</li><li>4. Low Water Alarm</li><li>5. Phase Fail</li><li>6. Backup Floats Active</li><li>7. Backup High Temp</li><li>8. Pump #1 Run</li><li>9. Pump #2 Run</li></ol> |
|--------------------------|--|

|                |  |
|----------------|--|
| Analog Outputs | Quantity (1) Analog Output(s) Included |
|----------------|--|

|                |   |
|----------------|---|
| Analog Outputs | <ol style="list-style-type: none"><li>1. Wet Well Level</li></ol> |
|----------------|---|

**STATION ENCLOSURE****ENCLOSURE DETAILS**

|                          |     |
|--------------------------|-----|
| Exterior Enclosure Color | Tan |
|--------------------------|-----|

**LEAD TIME & PRICING**

This quotation includes only equipment specifically mentioned herein and does not include, or infer inclusion of any additional piping, valves, wiring, etc., regardless of its relation to the quoted equipment. Discounts or commissions normally applied to the appropriate type of equipment also apply to these prices. Prices and estimated delivery dates are subject to change without notice in the event that vendors fail to maintain their quoted price and time of delivery to The Gorman-Rupp Company.

|                                       |             |
|---------------------------------------|-------------|
| Estimated Submittal Time <sup>1</sup> | 11-13 Weeks |
|---------------------------------------|-------------|

|                                      |           |
|--------------------------------------|-----------|
| Estimated Revision Time <sup>1</sup> | N/A Weeks |
|--------------------------------------|-----------|

|  |             |
|--|-------------|
| Estimated Production Time <sup>1,2,3</sup> | 17-19 Weeks |
|--|-------------|

<sup>1</sup> Estimated times are based on workload and vendor lead time trend data compiled at the time of quote and are subject to change without notice. To ensure this information is as accurate as possible please request revised lead times before the scope in this quotation is bid or placed in contract documents for bid.

<sup>2</sup> Estimated production lead time is based on either "approval-waived" or submittal "approval" with no revisions required at time of release to production. Add the "Estimated Revision Time" noted above to orders released to production that require any revisions.

<sup>3</sup> Due to the unprecedented and ongoing global supply chain constraints – the aforementioned estimated production lead-time is subject to change without notice. We reserve the right to update the estimated lead-time when the order is released to production.

#### PRICING

|                                    |                    |
|------------------------------------|--------------------|
| NET Price                          | \$224,031.00       |
| Shipping (To 1st U.S. Destination) | INCLUDED           |
| Additional Details                 | 2% TARIFF INCLUDED |

#### AGREEMENT

PROPOSAL DRAWING and bulletin illustrations are submitted to show general arrangement and approximate dimensions. The Company reserves the right to make such changes in details of design, construction or arrangement of equipment as in its judgment constitute as improvement. Engineering, dimensional and instruction data shall be furnished to the purchaser promptly after acceptance of the proposal for approval. Changes in layout design requested by purchaser after acceptance of proposal will be made at purchaser's expense and may result in a potential change in estimated submittal and/or lead time quoted.

The Gorman-Rupp Company will supply the products as described in this Proposal/Contract (hereinafter the "Scope of Supply"). The products supplied will conform to the Scope of Supply and any modifications thereto as contained in the submittals approved by the project engineer and as received by The Gorman-Rupp Company.

The equipment, apparatus and parts furnished are WARRANTED against defects in materials and workmanship. Specific applicable warranty is available at [www.grpumps.com/warranty](http://www.grpumps.com/warranty).

NO OTHER WARRANTY, EXPRESS OR IMPLIED, INCLUDING ANY WARRANTY OR MERCHANTABILITY OR FITNESS, SHALL EXIST AS TO ANY EQUIPMENT OR GOODS COVERED HEREBY, ALL SUCH WARRANTIES BEING EXPRESSLY WAIVED BY THE PURCHASER.

The Company will, at its option, repair or replace any equipment or part which proves defective under its warranty provided that the purchaser notifies the Company in writing of such defect within the applicable warranty period and provided further that after start-up service has been performed, the labor to replace accessory items, such as sump pumps, dehumidifiers, relays or alternators, etc., shall be the responsibility of the owner's maintenance personnel. The foregoing states the purchaser's sole remedy for any breach of warranty by the Company.

#### PRICE ESCALATION CLAUSE:

Quoted prices are firm for fifteen (15) days subject to an escalation not to exceed 5% for the following thirty (30) days and 1-1/2% per month thereafter.

Orders accepted by The Gorman-Rupp Company will be held firm if the orders are approved and released for production within forty-five (45) days provided shipment is accepted by the customer immediately following completion of production.

Orders accepted by The Gorman-Rupp Company where production release or shipment is delayed by the customer beyond thirty (30) days following acceptance of order by The Gorman-Rupp Company, prices will be subject to an escalation not exceed 1-1/2% per month until again released.

Price escalation will not exceed Federal guidelines.

THE AMOUNT OF ANY APPLICABLE TAX or other Government charge upon the production, sales, shipment and/or use of the equipment covered by this quotation shall be added to the price and shall be paid by the purchaser.

ALL ORDERS SHALL BE MADE OUT to The Gorman-Rupp Company; 600 South Airport Road; Mansfield, Ohio and shall be subject to acceptance by the Company. ORDER MAY BE CANCELED ONLY with the Company's written consent and ON TERMS that will indemnify the Company against loss. Cancellation fees shall be assessed in an amount equal to 50% of the Proposal/Contract amount after acceptance of the proposal for approval and/or purchaser receives submittal information; 100% of the Proposal/Contract amount after acceptance of the proposal for approval and/or verbal written approval release for production.

Performance of any contract by the Company shall be contingent upon credit approval, strikes, fires, accidents, war reduced supply of fuel or raw materials, or other restraints affecting shipments or curtailments in manufacturing or due to delays unavoidable or beyond the control of the Company.

THE COMPANY SHALL NOT, in any event, be liable for indirect, special, consequential or liquidated damages or penalties, whether based upon contract, warranty, tort or negligence.

When purchaser asks that equipment be warehoused or held for a stated or indefinite period after the equipment is ready for shipment, it is expressly understood and agreed that billing will be accepted as of the date when the equipment is ready for shipment and that STORAGE CHARGES (NOT TO EXCEED 1-1/2% PER MONTH) will apply thirty (30) days from that date.

Unless otherwise specified, DELIVERIES QUOTED are figured from the date of release to production. Statements as to expected shipment dates from the factory represent the Company's best judgment. Purchaser hereby waives all claim to damage caused by delay in shipment or delivery.

Unless otherwise specified, TERMS are Net 45 days from date of invoice, F.O.B., Mansfield, Ohio with freight allowed to the job site or first destination, whichever is applicable. All terms of credit are subject to the Company's approval and are independent of and not contingent upon the time and manner in which the purchaser may receive payment from others. Purchaser shall be notified of any changes in credit terms prior to acceptance of order.

ANY INDEBTEDNESS OWING TO THE COMPANY for a period longer than (30) days shall BEAR INTEREST until paid at the current prime rate. If the Company finds it necessary to place any indebtedness hereunder in the hands of an attorney for collection, purchaser shall pay all expenses and costs of collection, including reasonable attorney's fees.

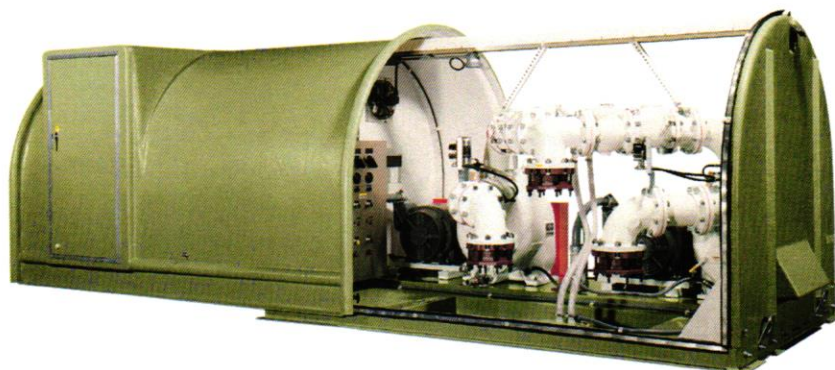
The right of subrogation against The Gorman-Rupp Company and all its assigns, affiliates, employees, insurers and underwriters, to the extent permitted by law, is waived.

THE PROVISIONS on the face hereof and these Terms and conditions constitute the entire agreement among the parties and supersede the provisions of any purchase order, other communication between the parties or any statement or representation not included herein. This Agreement may not be modified or amended except in writing signed by the parties intended to be bound thereby.

This Agreement shall be governed by the laws of the State of Ohio.

## 7X10 LIFT STATION INFORMATION SHEET

ABOVE-GROUND LIFT STATION



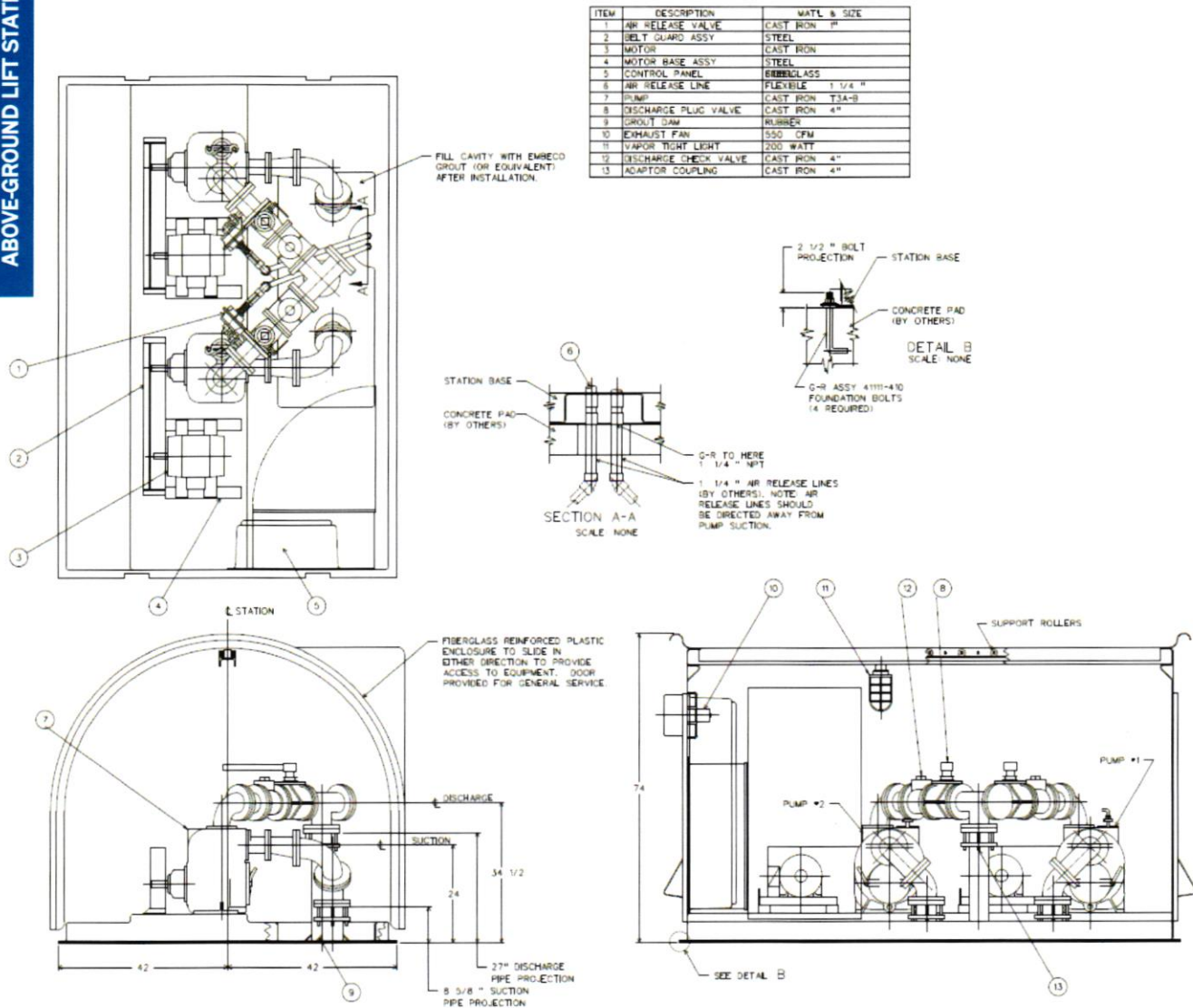
### Standard Mechanical and Electrical

| Station Type           | 7 X 10 with Duplex Pumps   |
|------------------------|--|
| Station Specs          | <ul style="list-style-type: none"> <li>Max Capacity 2500 GPM (157.7 lps)</li> <li>Max Head: 160' (48.8 m)</li> <li>Max Solids 3" (76.2 mm)</li> <li>Max Temperature 160°F (71°C)</li> <li>Assembled and tested in Gorman Rupp's USA Facilities</li> </ul>  |
| Pump Specs             | <ul style="list-style-type: none"> <li>Super T Series® 3" (75 mm), 4" (100 mm), 6" (150 mm), 8" (200 mm)</li> <li>Ultra V Series® 3" (75 mm), 4" (100 mm), 6" (150 mm)</li> </ul>  |
| Pump Motor             | <ul style="list-style-type: none"> <li>Voltage: 200 V 3P, 230 V 1P, 230 V 3P, 460 V 3P</li> <li>Cycles: 60 hz</li> <li>Horsepower: 2 HP to 50 HP</li> </ul>  |
| Station Piping         | <ul style="list-style-type: none"> <li>Individual suction spools</li> <li>Individual swing check valves</li> <li>3-way plug valve w/duplex pumps</li> <li>Individual automatic air release valves</li> <li>Station ships fully assembled and wired. Pumps, piping, controls and fiberglass enclosure mounted on a common steel base.</li> </ul>  |
| Enclosure              | <ul style="list-style-type: none"> <li>Enclosure: Quonset design with durable fiberglass construction</li> <li>Man door for station entry</li> <li>Two-way sliding cover provides convenient pump and control access</li> </ul>  |
| Control Panel Assembly | <ul style="list-style-type: none"> <li>InteGRInex Liquid Level controls designed to handle basic pump station requirements</li> <li>Custom Engineered NEMA Rated Automatic controls to operate pump and warning systems</li> <li>Reduced Voltage Solid State (RVSS) Starters and Variable Frequency Drives (VFDs) available upon request</li> <li>Fully customized control panels available, including H-O-A selectors, overload reset buttons and circuit</li> <li>Available U.L. and C.S.A. listings</li> <li>NEMA Rated Control Enclosures</li> </ul> |



## 7X10 SAMPLE OUTLINE DRAWING

ABOVE-GROUND LIFT STATION



Note: Drawing is a general layout of a lift station, for drawings specific to your application please contact your Gorman-Rupp Distributor.



**GORMAN-RUPP PUMPS**  
 P.O. BOX 1217  
 MANSFIELD, OHIO 44901-1217 | USA  
 TEL: 419.755.1011 | FAX: 419.755.1251

**GRPUMPS.COM**



*The Pump People®*

Product information is subject to change. consult factory for details. All images are for illustrative purposes only. Actual product may vary from printed representation.  
 © 2007-2021 The Gorman-Rupp Company. All rights reserved. Printed in the USA