

DATE SUBMITTED 06/12/2019  
 SUBMITTED BY COMMUNITY DEVELOPMENT DIRECTOR  
 DATE ACTION REQUIRED 06/19/2019

COUNCIL ACTION (X)  
 PUBLIC HEARING REQUIRED ( )  
 RESOLUTION ( )  
 ORDINANCE 1<sup>ST</sup> READING ( )  
 ORDINANCE 2<sup>ND</sup> READING ( )  
 CITY CLERK'S INITIALS Ø

**IMPERIAL CITY COUNCIL  
 AGENDA ITEM**

SUBJECT: DISCUSSION/ACTION: INSTALLATION OF PEDESTRIAN CROSSING - RRFB SYSTEMS AT W. ATEN ROAD / MORNING GLORY TR. AND N. IMPERIAL AVENUE (POST OFFICE SITE). 1.- APPROVAL OF PURCHASE AND INSTALLATION	
DEPARTMENT INVOLVED: COMMUNITY DEVELOPMENT DEPARTMENT	
BACKGROUND/SUMMARY: It has been detected that, some pedestrian crossing locations along the City are in the need to be improved in regards to the safety. In an effort to increase this safety for pedestrian traffic along the City of Imperia and taking this issue as a priority, City staff is studying and proposing the installation of proper traffic illuminated systems which can clearly advise vehicular traffic of the presence and activity for pedestrians at intersections and/or crossing locations 24 hrs. at day, seven days a week. To bring a solution to these issues related to pedestrian safety; the city of Imperial will provide safe pedestrian crosswalks at studied locations and will set up a list of candidate crosswalks. Due to pedestrian traffic, we are starting with those ones at intersection of W. Aten Road and Morning Glory Tr. and North Imperial Avenue in front of the Post Office.	
FISCAL IMPACT: LTA Measure D in the amount of \$35,581.02	ADMIN SERVICES SIGN INITIALS <u>Ø</u>
STAFF RECOMMENDATION: Approve and purchase the Installation of RRFB systems.	DEPT. INITIALS <u>ØM</u>
MANAGER'S RECOMMENDATION:	CITY MANAGER'S INITIALS <u>Ø</u>
MOTION:	
SECONDED: AYES: NAYES: ABSENT:	APPROVED ( ) DISAPPROVED ( ) REFERRED TO:
	REJECTED ( ) DEFERRED ( )

# CITY OF IMPERIAL COST ESTIMATE

## FOR PEDESTRIAN CROSSING W. ATEN RD. AND MORNING GLORY TR. Rectangular Rapid Flash Beacon (RRFB) System

Item No.	Description	Units	Estimate Quantity	Unit Price	Amount
1.	2180-Custom-IRWL 6 Lights, 12' of spacing UniDirectional Amber 50'.	EA	1	\$ 2,778.00	\$ 2,778.00
2.	2180-Custom-IRWL 6 Lights, 12' of spacing UniDirectional Amber 50'.	EA	1	\$ 2,778.00	\$ 2,778.00
3.	Epoxy, for IRWL Studs Gray.	EA	20	\$ 51.00	\$ 1,020.00
4.	Installation Accessory, IRWL, Wing, SR-SFT4.	EA	24	\$ 1.81	\$ 43.44
5.	Controller, IRWL, 120VAC, 120652, Hollow, Relay. Driver IRWL Controller. Cabinet Bracket Set, Fits Round Poles 2-3/8 & Up. Standard Hardware, Brackets, & Snap Locks. 85W/12V Solar Panel Package, Top of Pole Mount 4.5 Dia. Battery, 35Ah 12V AGM Lead Acid.	EA	1	\$ 2,545.00	\$ 2,545.00
6.	RRFB Dimmable Assembly w/ Universal mounting kit 10' Cable Amber Light Bar Bracket Mounting Kit RRFB.	EA	2	\$ 438.00	\$ 876.00
7.	Sign Mounting Kit, Banded, Flared Leg, Anti-Vandal for Mounting One Blinker Sign to a Large Pole.	EA	2	\$ 37.00	\$ 74.00
8.	Push Button Bulldog Add-On Option Kit Yellow W/ LED Wire 2C 18awg 16TC 2464 1000' Spool 300V CM Brn/Blu.	EA	2	\$ 181.00	\$ 362.00
9.	Pole Package, 15', 4.5" OD, 42" J-Bolts Includes: Pole J- Bolts Standard Aluminum Pole, 15' Schedule 40 Base, Aluminum Square Pedestal, No Paint, J-Bolt, 1"x 42"+4" ATSM F1554 GR-105 92k Washer Flat 1-1/16"ID x2.5OD"x.125" Galvanized.	EA	2	\$ 565.00	\$ 1,130.00
10.	W11-2 30X30 080 DG3 Ped Crossing Yel GRN Sign	EA	2	\$ 94.00	\$ 188.00
11.	Blinker On Site (SERVICE).	EA	1	\$4,666.00	\$4,666.00
	<b>TAX</b>			8.00%	\$1,316.84
13.	Freight.	EA	1	\$1,000.00	\$1,000.00
	<b>SUBTOTAL</b>				<b>\$18,777.28</b>
16.	24" x 24" x 36" Concrete Footing with 18" x 18" Round Concrete Base.	EA	2	\$ 1,300	\$ 2,600
	<b>TOTAL</b>				<b>\$ 21,377.28</b>

# STATEWIDE

## TRAFFIC SAFETY & SIGNS

- \* SALES / RENTALS
- \* SAFETY PRODUCTS
- \* LANE CLOSURES
- \* SIGNS / INSTALLATIONS
- \* TRAFFIC CONTROL PLANS

13755 Blaisdell Pl Poway, CA 92064 \* (619) 726-8978 \* fax (858) 679-7117

24/7 Emergency service \*\*Union\*\* - License # 975518

CUSTOMER City of Imperial

DATE: May 7, 2019

ATTN: Armando Aguilar	DELIVERY:
PHONE: 760-355-2538	
E MAIL: <a href="mailto:aaquilar@cityofimperial.org">aaquilar@cityofimperial.org</a>	
FAX:	

PROJECT:

QUOTED BY:

JOB#

SALES REP: OSCAR GONZALEZ

P.O.#

TERMS: NET30 OAC OR COD

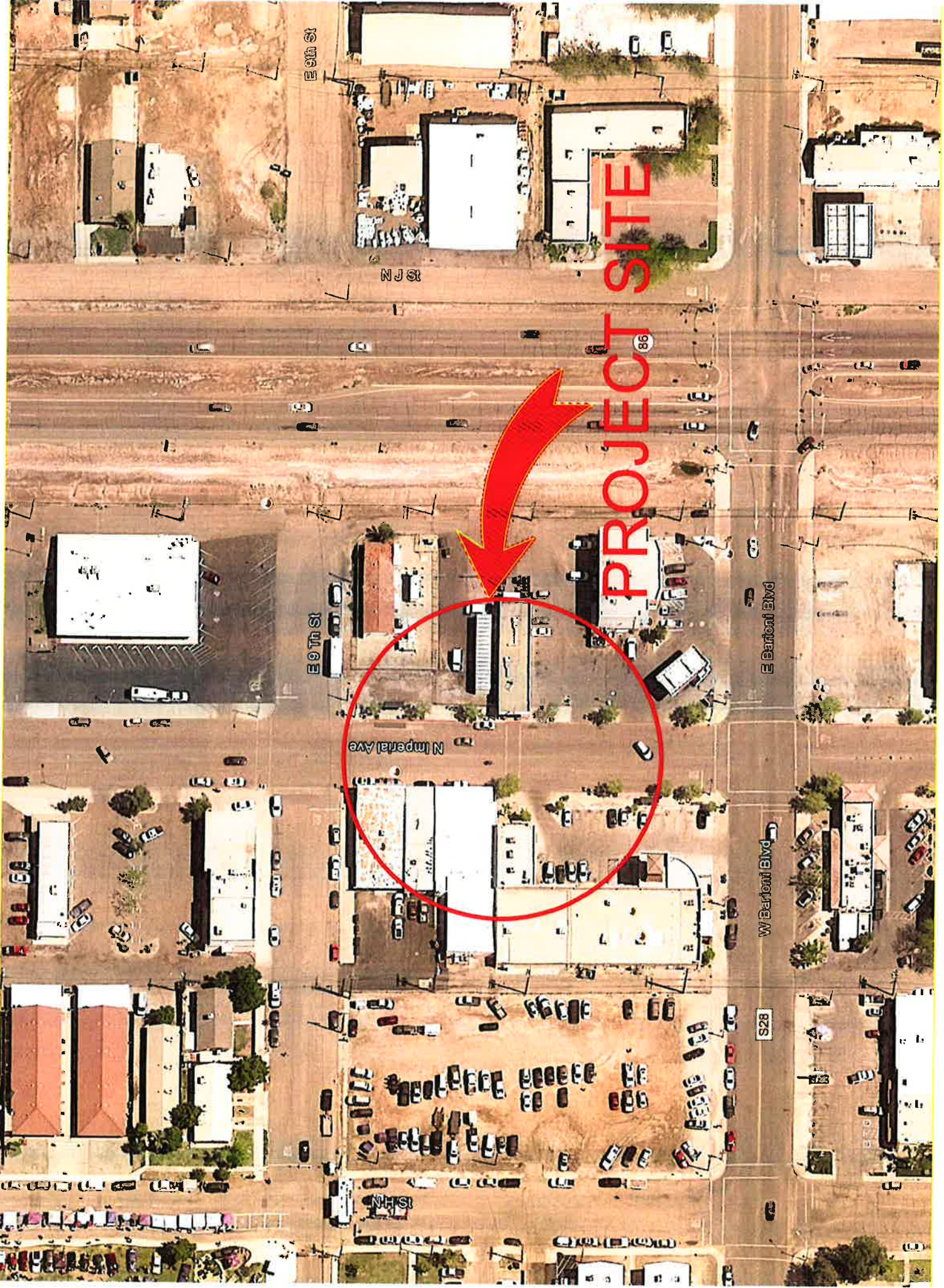
QTY	DESCRIPTION	COST	AMOUNT
	<b>RRFB Pedestrian Crosswalk Systems 75Ft</b>		\$ -
1	2180-Custom-IRWL 6 Lights, 12' of spacing UniDirectional Amber 50'	\$2,778.00	\$ 2,778.00
1	2180-Custom-IRWL 6 Lights, 12' of spacing UniDirectional Amber 50'	\$2,778.00	\$ 2,778.00
20	141111 -Epoxy, for IRWL Studs Gray	\$51.00	\$ 1,020.00
24	141397 - Installation Accessory, IRWL, Wing, SR-SFT4	\$1.81	\$ 43.44
1	500-314 - Controller, IRWL, 120VAC, 120652, Hollow, Relay	\$2,545.00	\$ 2,545.00
	Driver IRWL Controller		\$ -
1	2180-BRKT-R - Cabinet Bracket Set, Fits Round Poles 2-3/8 & Up		\$ -
	Standard Hardware, Brackets, & Snap Locks		\$ -
1	SLR-85-B - 85W/12V Solar Panel Package, Top of Pole Mount 4.5 Dia		\$ -
3	2180-35AHAGN-BAT - Battery, 35Ah 12V AGM Lead Acid		\$ -
2	138-089- RRFB Dimmable Assembly w/ Universal mounting kit	\$438.00	\$ 876.00
	10' Cable Amber Light Bar Bracket Mounting Kit RRFB		\$ -
2	111531K - Sign Mounting Kit, Banded, Flared Leg, Anti-Vandal	\$37.00	\$ 74.00
	For Mounting One Blinker Sign to a Large Pole		\$ -
2	101-620 - Push Button Bulldog Add-On Option Kit Yellow W/ LED	\$181.00	\$ 362.00
250	100-043 - Wire 2C 18awg 16TC 2464 1000' Spool 300V CM Brn/Blu		\$ -
2	101-920 - Pole Package, 15', 4.5" OD, 42" J-Bolts Includes:Pole	\$565.00	\$ 1,130.00
	J- Bolts Standard Aluminum Pole,15' Schedule 40		\$ -
	Base,Aluminum Square Pedestal, No Paint		\$ -
	J-Bolt,1"x 42"+4" ATSM F1554 GR-105 92k		\$ -
	Washer Flat 1-1/16"ID x2.5OD"x.125" Galvanized		\$ -
1	RS10114 - Blinker On Site	\$4,666.00	\$ 4,666.00
2	373-05075- W11-2 30X30 080 DG3 Ped Crossing Yel GRN Sign	\$94.00	\$ 188.00
	<b>SUBTOTAL</b>		\$ 16,460.44
	<b>DELIVERY</b>		\$ 1,000.00
	<b>SALES TAX</b> 8.00%		\$ 1,316.84
	<b>TOTAL</b>		\$ 18,777.28

### NOTES

SIGN HERE AND FAX BACK TO ACCEPT

DATE ACCEPTED





**PROJECT SITE**

E 6th St

N J St

E 9 Th St

N Imperial Ave

E Barlow Blvd

W Barlow Blvd

S 28

86



# CITY OF IMPERIAL COST ESTIMATE

## FOR PEDESTRIAN CROSSING NORTH IMPERIAL AVE. (POST OFFICE SITE) Rectangular Rapid Flash Beacon (RRFB) System

Item No.	Description	Units	Estimate Quantity	Unit Price	Amount
1.	2180-Custom-IRWL 5 Lights, 12' of spacing UniDirectional Amber 50'.	EA	1	\$ 2,333.00	\$ 2,333.00
2.	2180-Custom-IRWL 5 Lights, 12' of spacing UniDirectional Amber 50'.	EA	1	\$ 2,333.00	\$ 2,333.00
3.	Epoxy, for IRWL Studs Gray.	EA	17	\$ 51.00	\$ 867.00
4.	Installation Accessory, IRWL, Wing, SR-SFT4.	EA	20	\$ 1.81	\$ 36.20
5.	Controller, IRWL, 120VAC, 120652, Hollow, Relay. Driver IRWL Controller. Cabinet Bracket Set, Fits Round Poles 2-3/8 & Up. Standard Hardware, Brackets, & Snap Locks. 85W/12V Solar Panel Package, Top of Pole Mount 4.5 Dia. Battery, 35Ah 12V AGM Lead Acid.	EA	1	\$ 2,545.00	\$ 2,545.00
6.	RRFB Dimmable Assembly w/ Universal mounting kit 10' Cable Amber Light Bar Bracket Mounting Kit RRFB.	EA	2	\$ 438.00	\$ 876.00
7.	Sign Mounting Kit, Banded, Flared Leg, Anti-Vandal for Mounting One Blinker Sign to a Large Pole.	EA	2	\$ 37.00	\$ 74.00
8.	Push Button Bulldog Add-On Option Kit Yellow W/ LED Wire 2C 18awg 16TC 2464 1000' Spool 300V CM Brn/Blu.	EA	2	\$ 181.00	\$ 362.00
9.	Pole Package, 15', 4.5" OD, 42" J-Bolts Includes: Pole J- Bolts Standard Aluminum Pole, 15' Schedule 40 Base, Aluminum Square Pedestal, No Paint, J-Bolt, 1"x 42"+4" ATSM F1554 GR-105 92k Washer Flat 1-1/16"ID x2.5OD"x.125" Galvanized.	EA	2	\$ 565.00	\$ 1,130.00
10.	W11-2 30X30 080 DG3 Ped Crossing Yel GRN Sign	EA	2	\$ 94.00	\$ 188.00
	<b>TAX</b>			8.00%	\$859.54
11.	Freight.	EA	1	\$1,000.00	\$1,00.00
	<b>SUBTOTAL</b>				<b>\$12,603.74</b>
16.	24" x 24" x 36" Concrete Footing with 18" x 18" Round Concrete Base.	EA	2	\$ 1,300	\$ 2,600
	<b>TOTAL</b>				<b>\$ 14,203.74</b>

# STATEWIDE

## TRAFFIC SAFETY & SIGNS

- \* SALES / RENTALS
- \* SAFETY PRODUCTS
- \* LANE CLOSURES
- \* SIGNS / INSTALLATIONS
- \* TRAFFIC CONTROL PLANS

13755 Blaisdell Pl Poway, CA 92064 \* (619) 726-8978 \* fax (858) 679-7117

24/7 Emergency service \*\*Union\*\* - License # 975518

CUSTOMER City of Imperial

DATE: May 7, 2019

ATTN: Armando Aguilar	DELIVERY:
PHONE: 760-355-2538	
E MAIL: <a href="mailto:aaquilar@cityofimperial.org">aaquilar@cityofimperial.org</a>	
FAX:	

PROJECT:

QUOTED BY:

JOB#

SALES REP: OSCAR GONZALEZ

P.O.#

TERMS: NET30 OAC OR COD

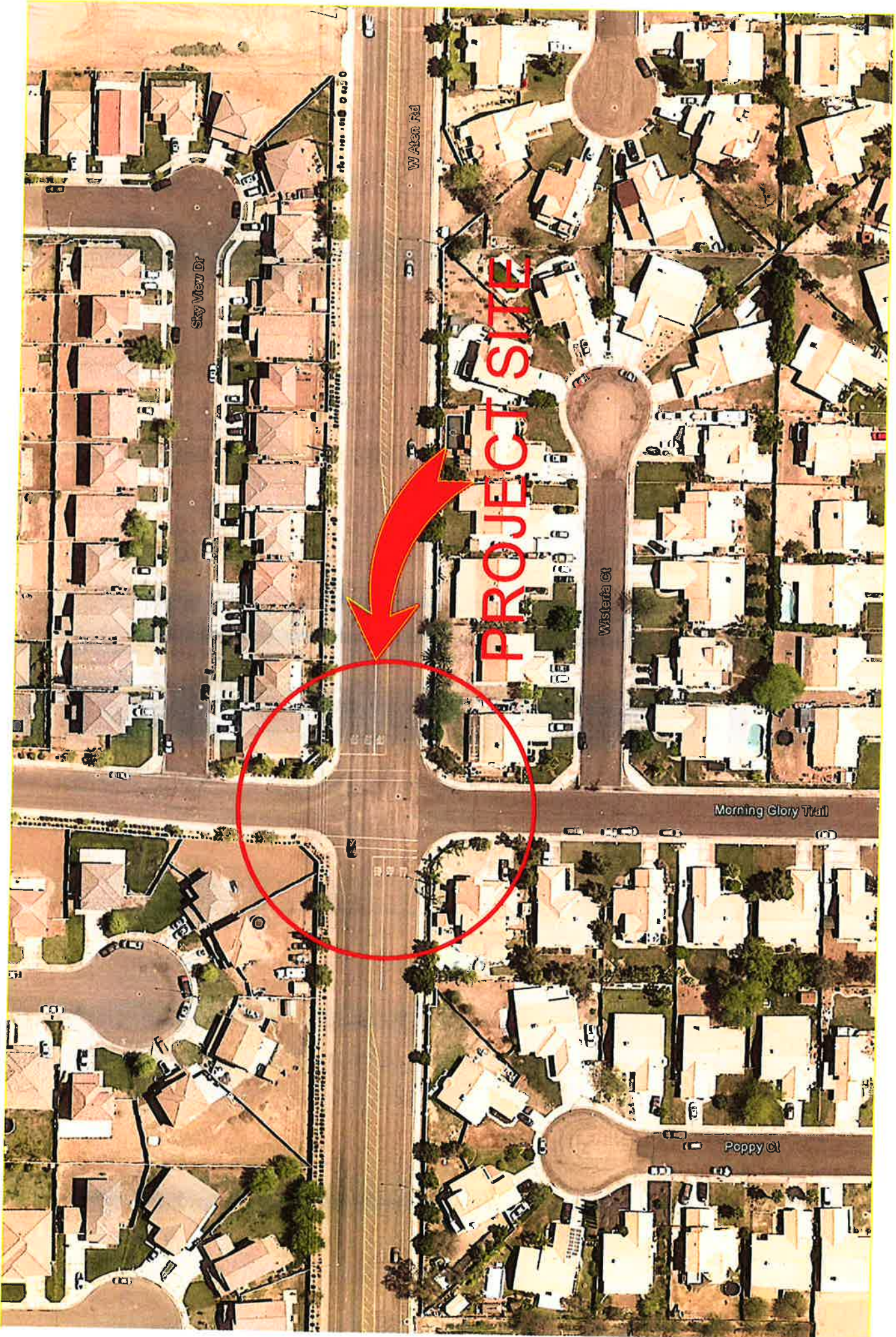
QTY	DESCRIPTION	COST	AMOUNT
	<b>RRFB Pedestrian Crosswalk Systems 56Ft</b>		\$ -
1	141286L - IRWL 5 Lights, 12' of spacing UniDirectional Amber 50'	\$2,333.00	\$ 2,333.00
1	141286L - IRWL 5 Lights, 12' of spacing UniDirectional Amber 50'	\$2,333.00	\$ 2,333.00
17	141111 -Epoxy, for IRWL Studs Gray	\$51.00	\$ 867.00
20	141397 - Installation Accessory, IRWL, Wing, SR-SFT4	\$1.81	\$ 36.20
1	500-314 - Controller, IRWL, 120VAC, 120652, Hollow, Relay	\$2,545.00	\$ 2,545.00
	Driver IRWL Controller		\$ -
1	2180-BRKT-R - Cabinet Bracket Set, Fits Round Poles 2-3/8 & Up		\$ -
	Standard Hardware, Brackets, & Snap Locks		\$ -
1	SLR-85-B - 85W/12V Solar Panel Package, Top of Pole Mount 4.5 Dia		\$ -
3	2180-35AHAGN-BAT - Battery, 35Ah 12V AGM Lead Acid		\$ -
2	138-089 - RRFB Dimmable Assembly with Universal Mounting Kit	\$438.00	\$ 876.00
	10' cable Amber light Bar Brk Mountiong kit RRFB		\$ -
2	111531K - Sign Mounting Kit, Banded, Flared Leg, Anti-Vandal	\$37.00	\$ 74.00
	For Mounting One Blinker Sign to a Large Pole		\$ -
2	101-620 - Push Button Bulldog Add-On Option Kit Yellow W/ LED	\$181.00	\$ 362.00
200	100-043 - Wire 2C 18awg 16TC 2464 1000' Spool 300V CM Brn/Blu		\$ -
2	101-920 - Pole Package, 15', 4.5" OD, 42" J-Bolts Includes:Pole	\$565.00	\$ 1,130.00
	J- Bolts Standard Aluminum Pole,15' Schedule 40		\$ -
	Base,Aluminum Square Pedestal, No Paint		\$ -
	J-Bolt,1"x 42"+4" ATSM F1554 GR-105 92k		\$ -
	Washer Flat 1-1/16"ID x2.5OD"x.125" Galvanized		\$ -
2	373-05075 - W11-2 30X30 080 DG3 Ped Crossing YEL GRN Sign	\$94.00	\$ 188.00
			\$ -
		<b>SUBTOTAL</b>	\$ 10,744.20
		<b>DELIVERY</b>	\$ 1,000.00
		<b>SALES TAX</b> 8.00%	\$ 859.54
		<b>TOTAL</b>	\$ 12,603.74

### NOTES

SIGN HERE AND FAX BACK TO ACCEPT

DATE ACCEPTED





PROJECT SITE

Sky View Dr

W Aten Rd

Wisteria Ct

Morning Glory Trail

Poppy Ct