

DATE SUBMITTED 06/14/2023  
 SUBMITTED BY COMMUNITY DEVELOPMENT DIRECTOR  
 DATE ACTION REQUIRED 06/21/2023

COUNCIL ACTION (X)  
 PUBLIC HEARING REQUIRED ( )  
 RESOLUTION ( )  
 ORDINANCE 1<sup>ST</sup> READING ( )  
 ORDINANCE 2<sup>ND</sup> READING ( )  
 CITY CLERK'S INITIALS HS

**IMPERIAL CITY COUNCIL  
 AGENDA ITEM**

SUBJECT:	DISCUSSION/ACTION:  1. APPROVAL OF AMENDMENT TO THE AGREEMENT WITH CHEN RYAN, INC. AND THE CITY OF IMPERIAL RELATING TO EXPANDING THE PROJECT SCOPE FOR THE SR86 IMPROVEMENT PROJECT
DEPARTMENT INVOLVED:	COMMUNITY DEVELOPMENT DEPARTMENT
BACKGROUND/SUMMARY:	<p>The City of Imperial has been working with Chen Ryan Associates on the design of the Highway 86 Beautification Project. The Beautification Project is aimed at increasing safety measures, promote pedestrian accessibility, and provide economic opportunities along the corridor. At this point the Beautification project finds itself only in the concept and design phase awaiting funding opportunities to be taken into the construction phase. As funding becomes available the project will be implemented as much as funding allows.</p> <p>Recently the City has received Complete Streets Grant Funding for use along Highway 86 which will allow a portion of the Beautification project to be taken into the construction phase for its implementation.</p> <p>The City has also received funding from the Affordable Housing and Sustainable Communities Program (AHSC) which includes connectivity improvements throughout the City including Highway 86. AHSC grant proposed improvements include class II bike lanes, sidewalks, crosswalks, and landscaping which improve safety and pedestrian accessibility. Given the overlapping improvement areas of both projects, combining available grant funding will significantly increase the benefit to City residents by allowing further implementation of the Highway 86 Beautification Project.</p> <p>In order to augment both Projects and increase benefits to City residents' staff is proposing to amend the original Contract for Design Services of the Highway 86 Beautification Project to include design services for the <u>AHSC Grant Improvements</u> (See Exhibit "A" Attached).</p> <p>Chen Ryan Associates has provided a cost estimate for Engineering Design Services on the above-mentioned projects as shown in Exhibit B.</p> <p>Staff recommends approval of amendment to agreement with Chen Ryan, Inc. in regard to SR86 Improvement Project to include design services of the AHSC Grant Improvements.</p>
FISCAL IMPACT: \$234,000.00 – LTA Measure D	ADMIN SERVICES SIGN INITIALS <u>DEP</u>
STAFF RECOMMENDATION: APPROVAL OF AMENDMENT TO THE AGREEMENT WITH CHEN RYAN, INC. AND THE CITY OF IMPERIAL RELATING TO EXPANDING THE PROJECT SCOPE FOR THE SR86 IMPROVEMENT PROJECT	DEPT. INITIALS <u>DM</u>

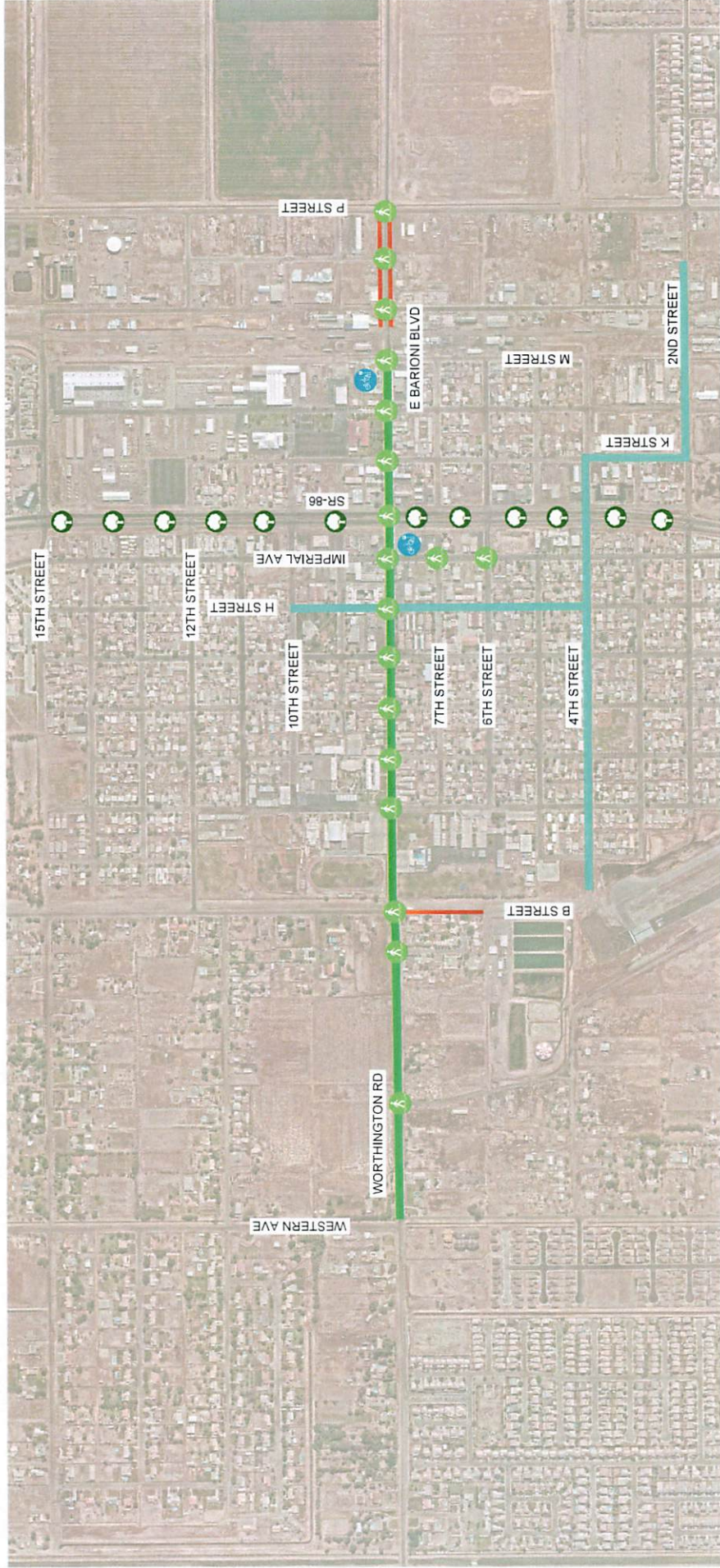
<p>CITY MANAGER'S INITIALS</p> <p><u>                    </u> <i>DM</i></p>	<p>MANAGER'S RECOMMENDATION:</p> <p><i>approve</i></p>
<p>MOTION:</p> <p>SECONDED:      AYES:</p> <p>                      NAYES:</p> <p>ABSENT:</p>	<p>APPROVED      ( )</p> <p>DISAPPROVED      ( )</p> <p>REFERRED TO:</p> <p>REJECTED      ( )</p> <p>DEFERRED      ( )</p>

# EXHIBIT "A"

LEGEND

- STI: CLASS II BIKE LANE
- STI: CLASS III BIKE ROUTE
- STI: SIDEWALK

- TRA: CONTINENTAL CROSSWALK
- TRA: PEDESTRIAN HYBRID BEACON
- TRA: BIKE RACKS
- TRA: MEDIAN LANDSCAPING / TREE PLANTING AT 50-FT SPACING



# EXHIBIT "B"



## Scope of Services

The Consultant will provide professional engineering services to the City of Imperial (the "Client") for the AHSC-ARPA Phase 1 project "the Project". CR Associates, Inc. ("CRA" or "Consultant") will provide professional engineering services to support the Project as shown in the developed Phase 1 Concept Plans and described herein.

## Task 1 Data Collection and Coordination

### Task 1.1 Field Observations

CRA will visit the project site on up to two (2) occasions to observe readily visible existing conditions and facilities, drainage patterns, utilities, surrounding land uses, and existing vegetation.

*Deliverables: Field Photos (as requested) (.jpeg)*

### Task 1.2 Utility and Agency Coordination

To the extent budgeted, CRA will coordinate with utility providers to determine the final disposition of impacted utilities within the project limits. CRA will assist the City in obtaining an Imperial Irrigation District (IID) electrical service connection for the proposed Pedestrian Hybrid Beacon (PHB) at the SR 86 @ 6<sup>th</sup> Street intersection and the proposed irrigation system. Additionally, CRA will assist the City in coordinating an encroachment permit from the County of Imperial for the proposed improvements along Worthington Road within County jurisdiction.

*Deliverables: None*

### Task 1.3 Utility Identification and Mapping

CRA will research and send letters to the local providers to obtain readily available utility verification maps. It is assumed utility as-builts will be provided by the City, County, and/or IID. As-builts and facility maps, including those received under previous authorizations, will be used to create wet and dry utility AutoCAD base maps. Utility research and plotting are assumed unwarranted and will not be provided for portions of the project that are limited to only signing and marking, or only landscape and irrigation.

*Deliverables: Ex Wet and Dry Utility Base Maps (.dwg)*

### Task 1.4 Supplemental Topographic Surveying and Right-of-Way Mapping

As part of the SR 86 Vision Plan effort, CRA obtained aerial topography along SR 86 within the project limits, and along Worthington Road from Western Avenue to K Street. Right-of-Way mapping along SR 86 was also performed. To support these Phase 1 improvements, CRA will contract with a survey subconsultant to perform supplemental aerial survey along Worthington Road from K Street to P Street; and right-of-way mapping along Worthington Road from Western Avenue to P Street. Right-of-way mapping will also be performed along Imperial Avenue between 6<sup>th</sup> Street and 4<sup>th</sup> Street, and E Street between Worthington Road and 7<sup>th</sup> Street.

*Deliverables: Topographic Survey and Right-of-Way Mapping base maps (.dwg)*

### Task 1.5 Traffic Operations Memorandum

It is understood the Project will be permitted as a CEQA Categorical Exemption (CE). To support the CEQA CE, CRA will prepare a traffic operations memorandum to document the traffic operations analysis performed in conjunction with the proposed improvements.

# EXHIBIT "B"



*Deliverables: Draft and Final Traffic Operations Memo (.pdf)*

## Task 2 Final Design

Based on the previously prepared Concept Plans and AHSC Scope of Work Exhibit (attached), CRA will prepare 40%, 90%, 100%, and Final (mylar) construction documents for City review and comment. The design will be based on the following standards: City of Imperial Standard Drawings, San Diego County Regional Standards, Caltrans Standard Plans, Caltrans Standard Specifications, and the current edition of the California Manual on Uniform Traffic Control Devices (CA-MUTCD). It is assumed that the proposed improvements will be shown in one consolidated plan set prepared using AutoCAD Civil 3D software.

It is understood that the City of Imperial will furnish and install the proposed landscape and irrigation system. Therefore, only schematic landscape and irrigation design will be prepared.

It is understood that precise grading of the improvements is not required, i.e., curb profiles, precise grades of sidewalks, driveways, curb access ramps, etc. will not be shown on the plans.

It is understood that the following traffic operational improvements will also be implemented by the project. It is anticipated that City staff will implement the traffic signal controller updates at each intersection.

1. Barioni Blvd @ SR 86
  - a. Lengthen the northbound left turn pocket from 235' to 275'.
  - b. Revise the signal phasing such that the northbound left turn movement operates in a lag phase.
  - c. Revise the eastbound and westbound lanes to each provide an exclusive left turn lane and a thru/right lane.
  - d. Revise the signal phasing to run concurrent eastbound and westbound left turn movements, followed by concurrent eastbound and westbound thru movements.
2. 15<sup>th</sup> Street @ SR 86
  - a. Revise the signal phasing such that the westbound left turn movement operates in a lag phase.
  - b. Revise the signal phasing such that the northbound left turn movement operates in a lag phase.
3. Imperial Avenue @ Barioni Blvd
  - a. Convert the all-way stop control to a 3-way stop control where westbound does not stop.
  - b. Consider an RRFB for the western leg crosswalk.
4. H Street @ Barioni Blvd
  - a. Convert the side-street-stop-control to all-way stop control.

### Task 2.1 Construction Plans (40%, 90%, 100%, Final)

It is anticipated the Construction Plans will consist of the following sheets:

- Title Sheet/Vicinity Map (1 sheet)
- Key Map & General Notes Sheet (1 Sheet)
- Construction Details (2 Sheets)
- Typical Cross Sections (2 Sheets)
- Improvement Plan: 1" = 20' Scale (4 Sheets)

# EXHIBIT "B"



- Traffic Signal Plan: 1" = 20' Scale (2 Sheets)
- Traffic Signal Notes and Details (1 Sheet)
- Signage and Striping Plan: 1" = 40' Scale (6 Sheets)
- Signage and Striping Notes and Details (1 Sheet)
- Permanent BMP Plan and Details: 1" = 20' Scale (3 Sheets)
- Typical Planting Layout Sheet (1 Sheet)
- Planting Plans: 1" 40' Scale (3 Sheets)
- Planting Legend and Notes (1 Sheet)
- Planting Details (2 Sheets)
- Typical Irrigation Layout Sheet (1 Sheet)
- Irrigation Plans: 1" = 40' Scale (3 Sheets)
- Irrigation Legend and Notes (1 Sheet)
- Irrigation Details (3 Sheets)

*Deliverables: 40%, 90%, 100%, and Final Plans (.pdf)*

## Task 2.2 Hydrology and Hydraulics Memo

The proposed improvements are anticipated to maintain the existing drainage patterns and result in a minor, but insignificant, increase in impervious area. Project limits hydrologic and hydraulic calculations will be performed to analyze and design proposed storm drain infrastructure and assess street conveyance. If peak flow attenuation is determined to be necessary, those calculations can be provided under a separate agreement. Off-site hydrologic and hydraulic calculations are excluded from this scope, but can be provided under a separate agreement if required. CRA will prepare a Hydrology and Hydraulics Memorandum to document the results of the analysis.

*Deliverables: Draft and Final Hydrology and Hydraulics Memo (.pdf)*

## Task 2.3 Storm Water Quality Management Memo

Since this is a public road project that will create 5,000 square feet or more of newly constructed contiguous impervious surface, it is assumed the project will comply with MS4 permit Section E.12.e. Low Impact Development Standards, except that treatment of runoff of the 85th percentile that cannot be infiltrated on-site shall follow U.S. EPA guidance regarding green infrastructure to the extent feasible. CRA will prepare memorandum to document compliance with these applicable storm water quality requirements.

*Deliverables: Draft and Final Storm Water Quality Memo (.pdf)*

## Task 2.4 Opinion of Probable Construction Cost (OPCC)

CRA will prepare an OPCC for the 40%, 90%, 100%, and Final submittals. The OPCC will be prepared to show the proposed bid items, unit prices, contingencies, and an overall opinion of construction cost.

*Deliverables: 40%, 90%, 100%, and Final OPCC (.pdf)*

## Task 2.5 Technical Special Provisions

CRA will prepare technical special provisions for the project in a City provided format. It is anticipated that the 2022 Caltrans Standard Specifications will be the Project's Standard Specification reference.

*Deliverables: 90%, 100%, and Final Technical Specifications (.doc)*

# EXHIBIT "B"



## Task 3 Bid and Construction Phase Support

### Task 3.1 Bidding Phase Support

CRA will provide services during the bid phase as requested by the City to the extent budgeted. Services may include: attending a pre-bid meeting, responding to requests for information (RFI)/clarifications, and assisting the City in the issuance of addenda to the bid package.

*Deliverables: Response to RFIs (.pdf)*

### Task 3.2 Construction Phase Support

CRA will assist the City during the construction phase as requested and to the extent budgeted. Services may include: attending a pre-construction meeting, responding to the Contractor's RFIs, reviewing submittal and changes orders, performing site walks to observe the progress of the work, and attending regularly scheduled construction meetings. Material and shop drawing submittal will be reviewed only for conformance with the information given in the Construction Documents. Such review and approvals or other action will not extend to means, methods, techniques, equipment choice and usage, sequences, schedules, or procedures of construction or to related safety procedures and programs.

*Deliverables: Response to RFIs and Shop Drawings (.pdf)*

### Task 3.3 Prepare Record Drawings

CRA will revise the signed mylar plan sheets based upon field changes and revisions as provided by the City's Construction Manager.

*Deliverables: Record Drawings (.pdf)*

## Anticipated Project Schedule

We will provide our services as expeditiously as practicable to meet a mutually agreed upon schedule and to support the timeline of the approved grant documents.

## Information Provided By Client

We shall be entitled to rely on the completeness and accuracy of information provided by the Client. The Client shall provide information requested by CRA during the project, this shall include:

- As-builts
- Previous reports within the Project area

## Fee and Billing

CRA will perform the scope of services outlined above on a time and materials, not to exceed, basis. Fees will be invoiced monthly based upon the services performed as of the invoice date.

Task 1.....\$30,000

Task 2.....\$185,500

Task 3....\$18,500

Total.....\$234,000

# EXHIBIT "B"



## Additional Services

Any services not specifically described in the above scope, as well as any changes in the scope the Client requests, will be considered Additional Services and will be performed at our then-current hourly rates. Additional services we can provide include, but are not limited to, the following:

- Providing any other services not expressly included in this Agreement
- SWPPP or WPCP
- QSP services during construction
- Temporary Water Pollution Control Plans
- Demolition Plans
- Traffic Control Plans
- Preparation of technical studies not included in this Scope of Services
- Hazardous and remediation services
- Environmental study preparation
- Geotechnical investigation
- Traffic operations analysis
- Payment of any agency fees
- Franchise utility design
- Wet utility design, beyond relocation of at-grade facilities and establishment of one domestic water irrigation service
- Reclaimed water design and permitting
- Architectural design
- Resource Agency coordination and permitting
- Monument preservation
- Construction staking