

Agenda Item No. F-3

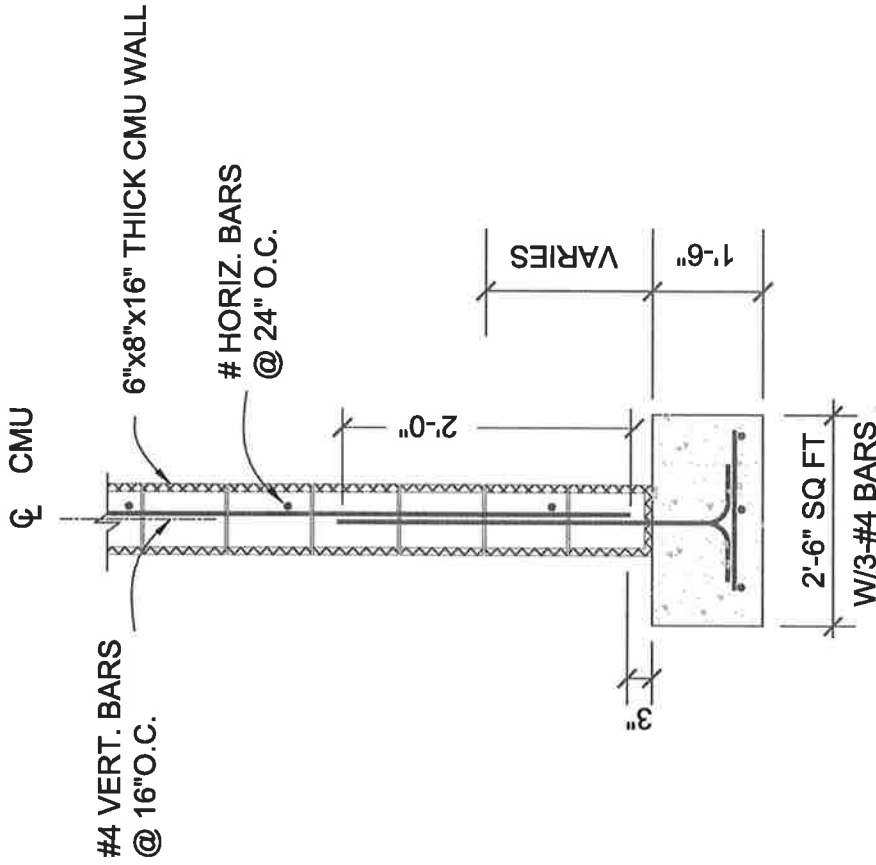
DATE SUBMITTED 9/26/2018
 SUBMITTED BY COMMUNITY SERVICES DIRECTOR HALLER
 DATE ACTION REQUIRED 10/03/2018

COUNCIL ACTION (X)
 PUBLIC HEARING REQUIRED ()
 RESOLUTION ()
 ORDINANCE 1ST READING ()
 ORDINANCE 2ND READING ()
 CITY CLERK'S INITIALS 40

**IMPERIAL CITY COUNCIL
 AGENDA ITEM**

SUBJECT: DISCUSSION/ACTION: SKY RANCH PARK WALL 1. AUTHORIZATION TO SEEK BIDS	
DEPARTMENT INVOLVED: COMMUNITY SERVICES DEPARTMENT	
BACKGROUND/SUMMARY: On September 5, 2018, City Council provided direction to replace the 161 linear foot section of the retention wall running north to south at Sky Ranch Park due to vandalism. The direction is to replace the section with a six foot block wall. For more information, please see attached documents.	
FISCAL IMPACT: \$70,000 from Sky Ranch Landscape District District Fund.	ADMIN SERVICES SIGN INITIALS _____
STAFF RECOMMENDATION: Authorization to seek bids.	DEPT. INITIALS <u>[Signature]</u>
MANAGER'S RECOMMENDATION:	CITY MANAGER'S INITIALS <u>[Signature]</u>
MOTION:	
SECONDED: AYES: NAYES: ABSENT:	APPROVED () REJECTED () DISAPPROVED () DEFERRED () REFERRED TO:

COST BREAKDOWN FOR 6' BLOCK WALL			
ITEM	RECONSTRUCTION		COST
BIDDING COST			\$ 1,200.00
Mobilization			\$ 5,000.00
Demolition			\$ 7,500.00
Block Wall 6"X8"X16"	161 LF @ 175.00		\$ 28,175.00
Materials Testing (Compactions, Concrete Strength, Mortar, Grout)			\$ 8,500.00
Storm Water Pollution			\$ 1,500.00
Labor Compliance			\$ 7,500.00
		25%	\$ 8,919.00
		Total	\$ 68,294.00



6' BLOCK WALL

NOT TO SCALE

NOTES:

1. Masonry units shall be grade A conforming to ASTM C90 and manufactured in accordance with concrete masonry association standards.
2. Portland Cement concrete shall conform to ASTM C150
3. Concrete shall have a minimum strength of 4,500psi at 28 days
4. Mortar shall be freshly prepared and shall conform to ASTM C270
5. Reinforcing steel shall be deformed bars conforming to ASTM A615 grade 40. Wire reinforcing shall conform to ASTM A185
6. No sections of the wall may be within 3 feet of a fire hydrant, post indicator valve and/or Fire Department connection areas.

CITY OF IMPERIAL

Phone: (760) 355-1152 420 So Imperial Ave.
 Fax: (760) 355-4718 Imperial, CA 92251

TO BE USED AS A REFERENCE ONLY

6' BLOCK WALL

IN THE CITY OF IMPERIAL, CALIFORNIA
 STD. DWG. NO.3

DATE: 2011

BY: OM

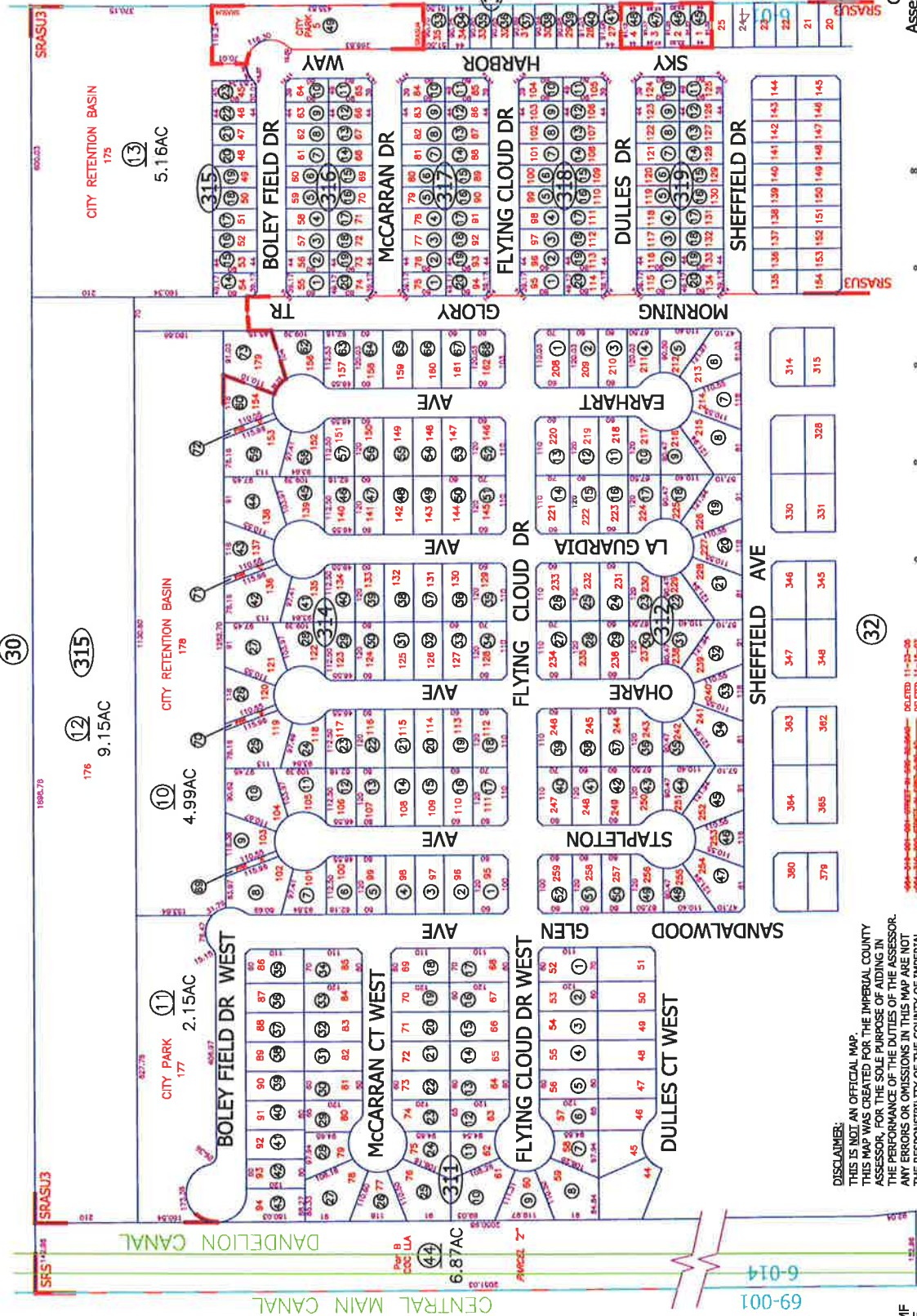
SHEET: **1**
 OF: **1**

POR. TR. 45 T15S, R13 E, SKY RANCH SUBDIVISION AND
 SKY SUBDIVISION UNIT NO. 2 AND SKY RANCH AVONES SUBDIVISION UNIT NO.3 AND UNIT NO. 4

Tax Area Code
 6-014

64-31

FM 25-60
 FM 22-86
 FM 26-14
 FM 26-96



Bk. 62
 Pg. 05

DISCLAIMER:
 THIS IS NOT AN OFFICIAL MAP.
 THIS MAP WAS CREATED FOR THE IMPERIAL COUNTY
 ASSESSOR, FOR THE SOLE PURPOSE OF AIDING IN
 THE PERFORMANCE OF THE DUTIES OF THE ASSESSOR.
 ANY ERRORS OR OMISSIONS IN THIS MAP ARE NOT
 THE RESPONSIBILITY OF THE COUNTY OF IMPERIAL
 OR THE ASSESSOR. (REV. & TAX. CODE SEC.327)

06-17-08 MF
 11-27-07 MF
 11-16-07 MF
 01-29-07 MF
 12-23-05 RM
 FROM 43-32
 02-28-05 AR

CITY OF IMPERIAL
 Assessors Map Bk. 64-Pg. 31
 County of Imperial, Calif.

Default Title



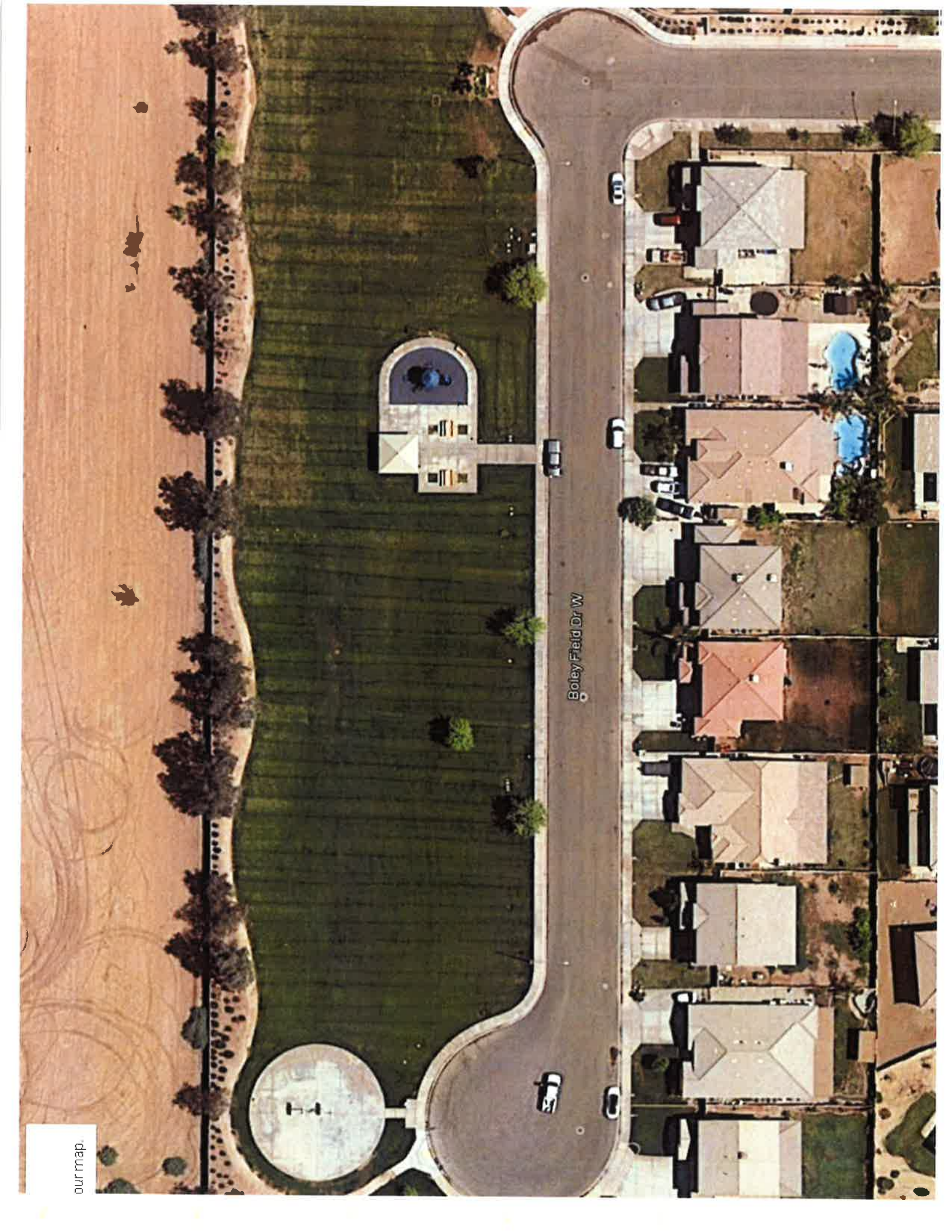
1" = 47 ft

Sub Title

09/25/2018



This map may represent a visual display of related geospatial information. Data provided hereon is not guaranteed for accuracy. Please contact the responsible party for most up to date information.



our map.

SKY RANCH PARK



North to South (Austin Road) – 161 linear feet from south end to north end of city property