

DATE SUBMITTED 12/11/2019
 SUBMITTED BY COMMUNITY DEVELOPMENT DIRECTOR
 DATE ACTION REQUIRED 12/18/2019

COUNCIL ACTION (X)
 PUBLIC HEARING REQUIRED ()
 RESOLUTION ()
 ORDINANCE 1ST READING ()
 ORDINANCE 2ND READING ()
 CITY CLERK'S INITIALS RB

**IMPERIAL CITY COUNCIL
 AGENDA ITEM**

SUBJECT: DISCUSSION/ACTION:
 LABRUCHERIE RD WIDENING PROJECT FROM ATEN BLVD TO TRESHILL RD

1. AUTHORIZATION TO SEEK BIDS FOR THE CONSTRUCTION OF THE WIDENING PROJECT.
2. AUTHORIZATION TO SUBMIT APPLICATION TO IID TO COMPLETE DETAILED DESIGN AND CONSTRUCTION TO PIPELINE A PORTION OF DAHLIA CANAL IN THE AMOUNT OF \$550,000.

DEPARTMENT INVOLVED: COMMUNITY DEVELOPMENT DEPARTMENT

BACKGROUND/SUMMARY:

The City of Imperial has secured Surface Transportation Block Grant (STBG) funding for the widening a segment of LaBrucherie Road between Aten Boulevard & Treshill Road. LTA Measure D funds will be used to leverage the federal funds for the construction of the project. Said segment of LaBrucherie Road currently has a two-lane cross-section configuration which capacity is not enough to properly handle the travelers between Imperial and El Centro. This widening project will not only provide a full four-lane cross-section configuration, but also will allow to accommodate concrete curb & gutter, sidewalk and bike paths to improve safety, increase mobility and offer additional route options for our community. For details see Exhibits 1 & 2 attached herewith.

In addition, the City has worked with IID to include in their Indirect Pipeline Program Fund a project for undergrounding a portion of approximately 2,600 feet long of Dahlia Canal located within the above-referenced segment of LaBrucherie Road. Working in collaboration with IID's Water Department has already given immediate results due to the inclusion of this project was approved by their Board of Directors last December 3rd. This project falls under IID's local public entity project category with a 75 percent indirect pipeline fund of eligible pipelining costs. Therefore the City will be responsible to match 25 percent of these costs and pay 100 percent of the ineligible costs, which typically include import/export of soils, backfill compaction, power line and other utility and encroachment relocation work, as well as street repairs. IID's preliminary high-level cost estimate to complete said undergrounding construction is approximately \$1.9 million. Also, City has to pay costs associated with the preparation of construction plans and encroachment permit. For details see Exhibits 3 & 4 attached herewith.

FISCAL IMPACT:

1. Widening Project – \$2,401,750
 - \$1,841,000 from STBG funds
 - \$ 560,750 from Measure “D” funds
2. Pipeline Dahlia Canal - \$550,000 from LTA Measure “D” and Circulation funds

ADMIN SERVICES SIGN INITIALS _____

STAFF RECOMMENDATION:

1. Authorization to seek bids for Widening Project.
2. Authorization to Pipeline Dahlia Canal.

DEPT. INITIALS

OM

MANAGER'S RECOMMENDATION:

CITY
MANAGER'S
INITIALS

AB

MOTION:

SECONDED:

AYES:

NAYES:

ABSENT:

APPROVED ()

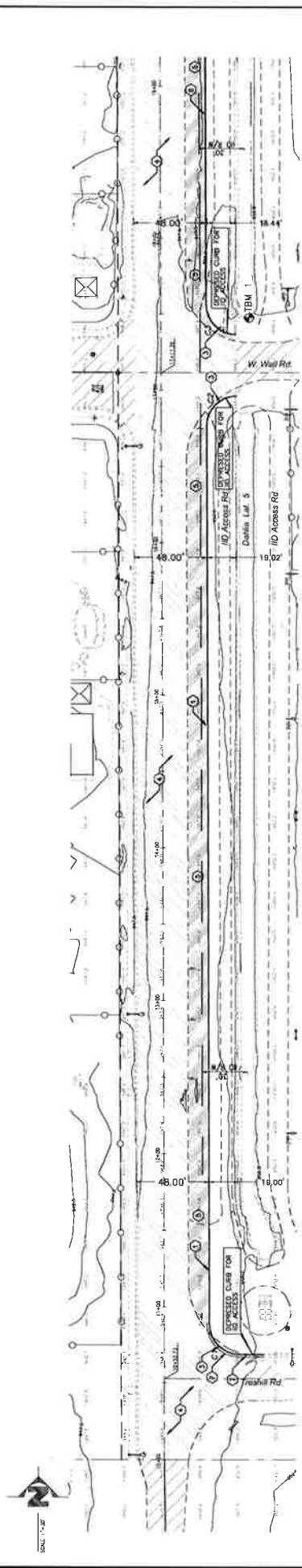
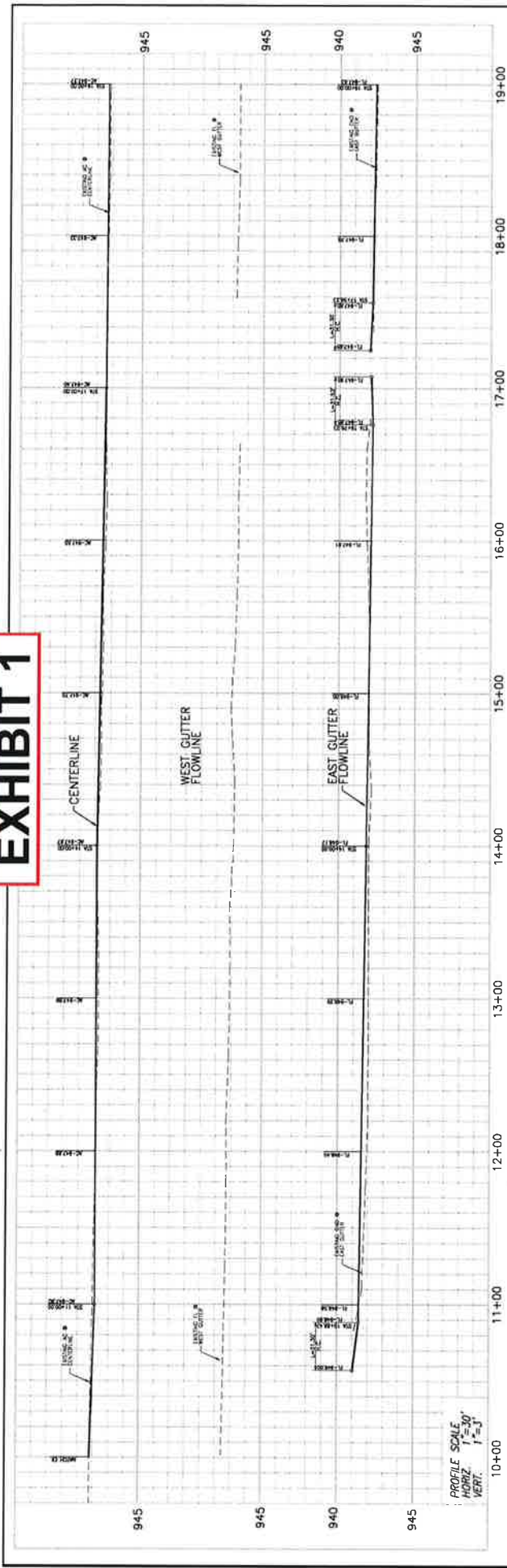
DISAPPROVED ()

REFERRED TO:

REJECTED ()

DEFERRED ()

EXHIBIT 1



CONSTRUCTION NOTES:

- UNDER THE EXISTING WALKWAY, FRAME AND CONCRETE TO COMPLETING COLLAR TO MATCH EXISTING WALKWAY. SEE SHEET 31.
- UNDER THE EXISTING WALKWAY, FRAME AND CONCRETE TO COMPLETING COLLAR TO MATCH EXISTING WALKWAY. TO MATCH EXISTING WALKWAY. SEE SHEET 31.

CONSTRUCTION NOTES:

- TOP OF PCC SLAB SHALL BE CITY OF IMPERIAL, D.C. NO. 38
- TOP OF PCC SLAB SHALL BE CITY OF IMPERIAL, D.C. NO. 38
- TOP OF PCC SLAB SHALL BE CITY OF IMPERIAL, D.C. NO. 38
- TOP OF PCC SLAB SHALL BE CITY OF IMPERIAL, D.C. NO. 38
- TOP OF PCC SLAB SHALL BE CITY OF IMPERIAL, D.C. NO. 38
- TOP OF PCC SLAB SHALL BE CITY OF IMPERIAL, D.C. NO. 38
- TOP OF PCC SLAB SHALL BE CITY OF IMPERIAL, D.C. NO. 38
- TOP OF PCC SLAB SHALL BE CITY OF IMPERIAL, D.C. NO. 38

La Brucherie Rd

NO.	DATE	BY	REVISIONS

APPROVED BY ACTING CITY ENGINEER
CITY OF IMPERIAL, CA

ENGINEER OF RECORD
PLANS PREPARED UNDER THE SUPERVISION OF
BY: CARLOS CORREAS DATE: _____
R.C.E. NO.: 55432

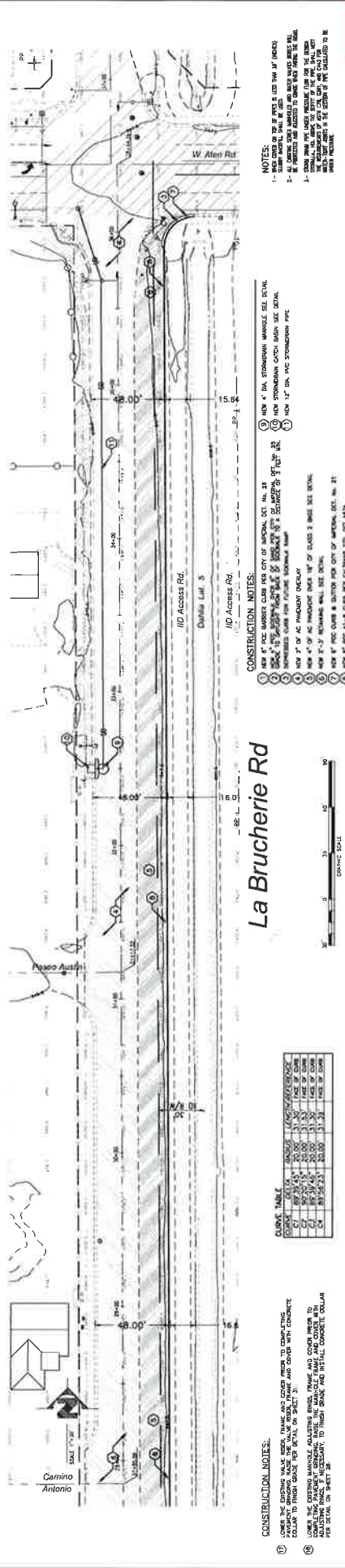
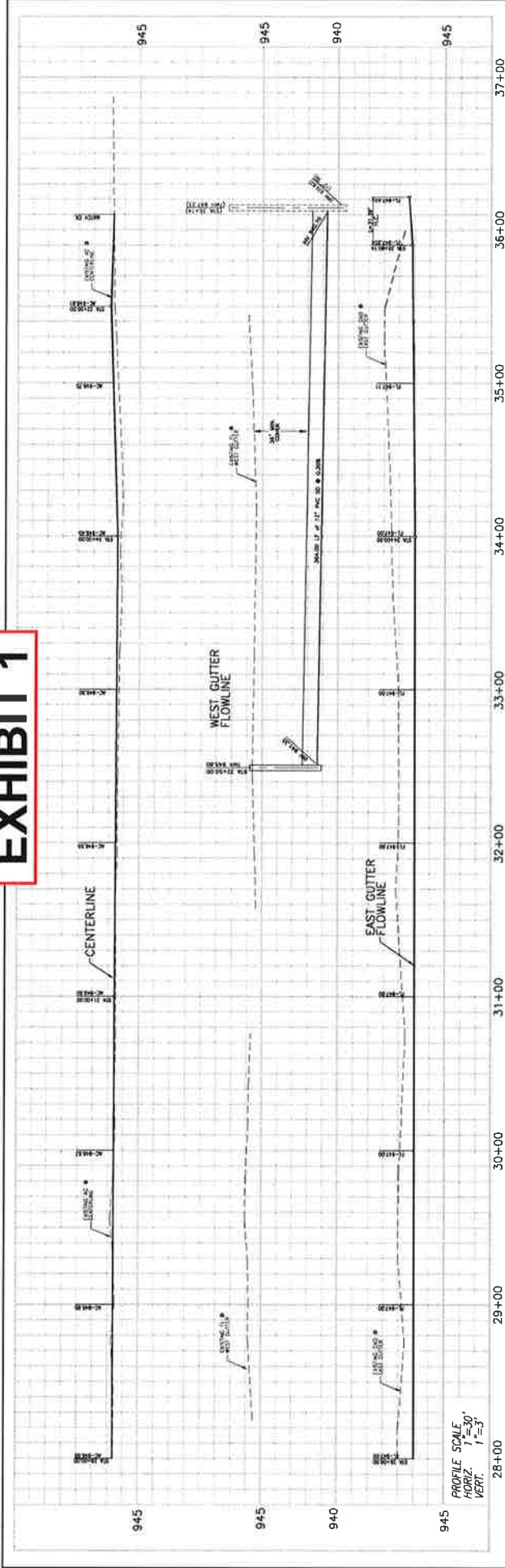
SEAL
CITY OF IMPERIAL
REGISTERED PROFESSIONAL ENGINEER
No. 12345
Exp. 12/31/2025

DATE: SEP. 09, 2019 BENCHMARK: SEE SHEET NO. 1

CITY OF IMPERIAL
IMPROVEMENT PLANS
PLAN & PROFILE
LA BRUCHERIE RD
FROM WATER BLDG. TO FRESHILL RD.

SHEET 3 of 11 SHEETS
JOB NO. C-19093-00

EXHIBIT 1



CONSTRUCTION NOTES:

1. UNDER THE EXISTING WALK, FRAME AND COVER PER TO COMPLETING CURB TO FINISH GRADE OR BETTER, OR SLURRY AND COVER WITH CONCRETE.
2. UNDER THE EXISTING MANHOLE, RAISING BRICK FRAME AND COVER FROM TO FINISH GRADE TO FINISH GRADE, TO BE MANHOLE WITH 18" COVER WITH PER DETAIL OF SHEET 28.
3. NEW 4" DIA. STORMWATER MANHOLE SEE DETAIL.
4. NEW 12" DIA. PVC STORMWATER PIPE.
5. NEW 12" DIA. PVC STORMWATER PIPE.
6. NEW 4" DIA. MANHOLE WITH 18" OF GRADE 3 INCH SEE DETAIL.
7. NEW 2'-3" RAINWATER WALL SEE DETAIL.
8. NEW 4" PVC CURB & GUTTER PER CITY OF IMPERIAL DET. NO. 21.
9. NEW 4" PVC 4'-8" CURB AND GUTTER 15% DET. NO. 21.

CONSTRUCTION NOTES:

1. NEW 4" DIA. STORMWATER MANHOLE SEE DETAIL.
2. NEW 12" DIA. PVC STORMWATER PIPE.
3. NEW 12" DIA. PVC STORMWATER PIPE.
4. NEW 4" DIA. MANHOLE WITH 18" OF GRADE 3 INCH SEE DETAIL.
5. NEW 2'-3" RAINWATER WALL SEE DETAIL.
6. NEW 4" PVC CURB & GUTTER PER CITY OF IMPERIAL DET. NO. 21.
7. NEW 4" PVC 4'-8" CURB AND GUTTER 15% DET. NO. 21.

CONSTRUCTION NOTES:

1. NEW 4" DIA. STORMWATER MANHOLE SEE DETAIL.
2. NEW 12" DIA. PVC STORMWATER PIPE.
3. NEW 12" DIA. PVC STORMWATER PIPE.
4. NEW 4" DIA. MANHOLE WITH 18" OF GRADE 3 INCH SEE DETAIL.
5. NEW 2'-3" RAINWATER WALL SEE DETAIL.
6. NEW 4" PVC CURB & GUTTER PER CITY OF IMPERIAL DET. NO. 21.
7. NEW 4" PVC 4'-8" CURB AND GUTTER 15% DET. NO. 21.

CONSTRUCTION NOTES:

1. NEW 4" DIA. STORMWATER MANHOLE SEE DETAIL.
2. NEW 12" DIA. PVC STORMWATER PIPE.
3. NEW 12" DIA. PVC STORMWATER PIPE.
4. NEW 4" DIA. MANHOLE WITH 18" OF GRADE 3 INCH SEE DETAIL.
5. NEW 2'-3" RAINWATER WALL SEE DETAIL.
6. NEW 4" PVC CURB & GUTTER PER CITY OF IMPERIAL DET. NO. 21.
7. NEW 4" PVC 4'-8" CURB AND GUTTER 15% DET. NO. 21.

CURVE TABLE

STATION	PC	PVI	PT	LC	CE	EC	STATION
28+00	28+00	28+00	28+00	28+00	28+00	28+00	28+00
29+00	29+00	29+00	29+00	29+00	29+00	29+00	29+00
30+00	30+00	30+00	30+00	30+00	30+00	30+00	30+00
31+00	31+00	31+00	31+00	31+00	31+00	31+00	31+00
32+00	32+00	32+00	32+00	32+00	32+00	32+00	32+00
33+00	33+00	33+00	33+00	33+00	33+00	33+00	33+00
34+00	34+00	34+00	34+00	34+00	34+00	34+00	34+00
35+00	35+00	35+00	35+00	35+00	35+00	35+00	35+00
36+00	36+00	36+00	36+00	36+00	36+00	36+00	36+00
37+00	37+00	37+00	37+00	37+00	37+00	37+00	37+00

CONSTRUCTION NOTES:

1. UNDER THE EXISTING WALK, FRAME AND COVER PER TO COMPLETING CURB TO FINISH GRADE OR BETTER, OR SLURRY AND COVER WITH CONCRETE.
2. UNDER THE EXISTING MANHOLE, RAISING BRICK FRAME AND COVER FROM TO FINISH GRADE TO FINISH GRADE, TO BE MANHOLE WITH 18" COVER WITH PER DETAIL OF SHEET 28.
3. NEW 4" DIA. STORMWATER MANHOLE SEE DETAIL.
4. NEW 12" DIA. PVC STORMWATER PIPE.
5. NEW 12" DIA. PVC STORMWATER PIPE.
6. NEW 4" DIA. MANHOLE WITH 18" OF GRADE 3 INCH SEE DETAIL.
7. NEW 2'-3" RAINWATER WALL SEE DETAIL.
8. NEW 4" PVC CURB & GUTTER PER CITY OF IMPERIAL DET. NO. 21.
9. NEW 4" PVC 4'-8" CURB AND GUTTER 15% DET. NO. 21.

UNDERGROUND SERVICE ALERT
CALL: TOLL FREE 811
TWO WORKING DAYS BEFORE YOU DIG

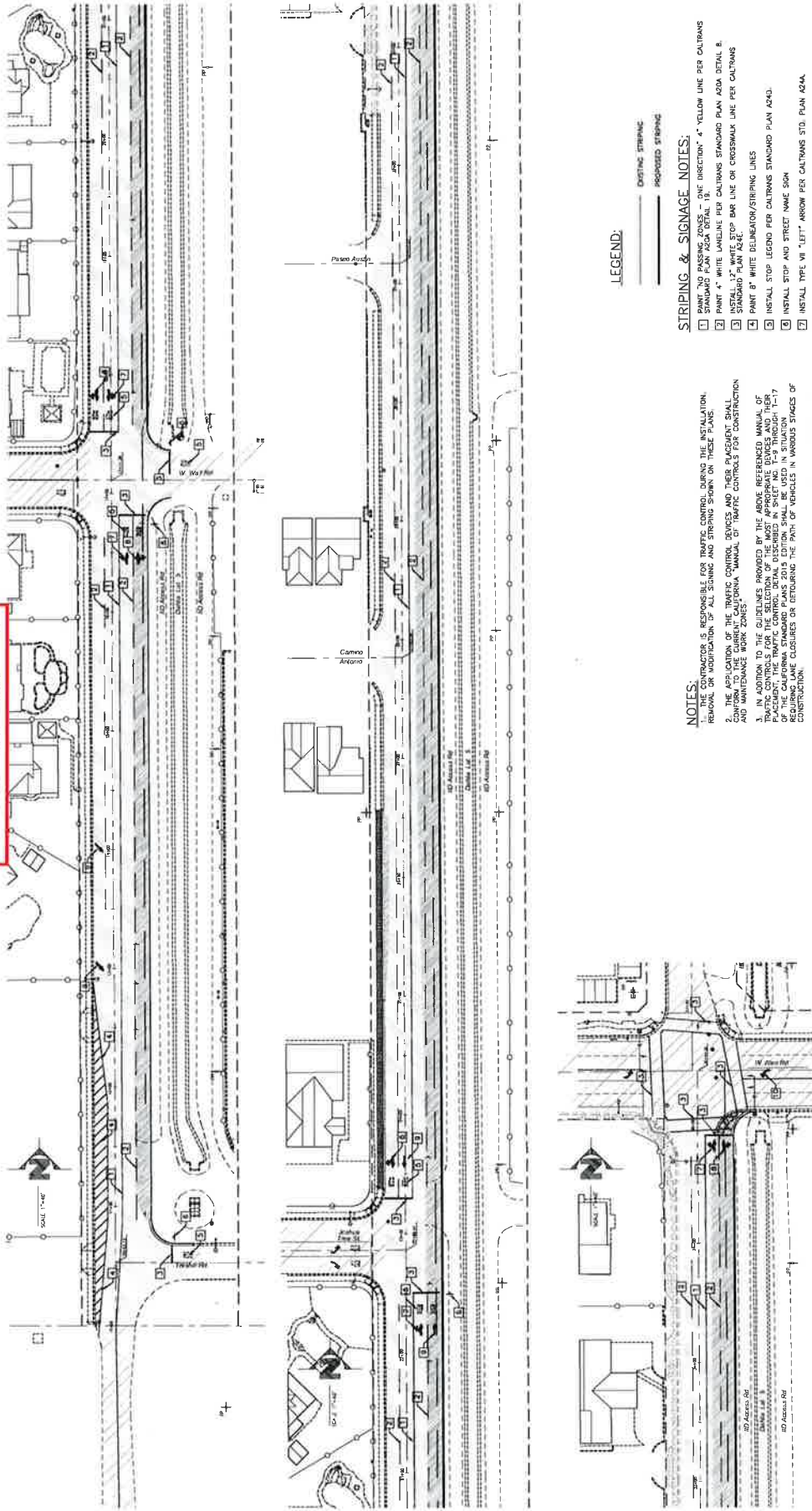
APPROVED BY ACTING CITY ENGINEER
CITY OF IMPERIAL, CA
DATE: _____ BY: _____
REVISIONS: _____

ENGINEER OF RECORD
PLANS PREPARED UNDER THE SUPERVISION OF
BY: CARLOS CORRALES DATE: _____
R.C.E. NO.: 55432

SEAL
L.C. ENGINEERING CONSULTANTS INC.
1100 G Street
Imperial, CA 92543
DATE: SEP 08, 2018 BENCHMARK: SEE SHEET NO. 1
R.C.E. NO.: C19033.00

CITY OF IMPERIAL
IMPROVEMENT PLANS
PLAN & PROFILE
FROM VES. S.D. TO PRELIMINARY
SHEET 5 OF 11 SHEETS
C19033.00

EXHIBIT 1



STRIPING & SIGNAGE NOTES:

1. INSTALL 4" YELLOW LINE PER CALTRANS STANDARD PLAN A24A DETAIL 1.9.
2. INSTALL 1/2" WHITE LAMELINE PER CALTRANS STANDARD PLAN A24A DETAIL 8.
3. INSTALL 1/2" WHITE STOP BAR LINE OR CROSSWALK LINE PER CALTRANS STANDARD PLAN A24A DETAIL 1.10.
4. INSTALL 1/2" WHITE DELINEATION/STRIPING LINES.
5. INSTALL STOP LEGEND PER CALTRANS STANDARD PLAN A24A.
6. INSTALL STOP AND STREET NAME SIGN.
7. INSTALL TYPE VI "LEFT" ARROW PER CALTRANS STD. PLAN A24A.
8. INSTALL TYPE VII "RIGHT" ARROW PER CALTRANS STD. PLAN A24A.
9. INSTALL TYPE I 10'-0" ARROW PER CALTRANS STD. PLAN A24A.
10. INSTALL TYPE IV "LEFT" ARROW PER CALTRANS STD. PLAN A24A.

- NOTES:**
1. THE CONTRACTOR IS RESPONSIBLE FOR TRAFFIC CONTROL DURING THE INSTALLATION OF ALL STRIPING AND SIGNAGE.
 2. THE CONTRACTOR SHALL BE RESPONSIBLE FOR THE INSTALLATION OF ALL TRAFFIC CONTROL DEVICES AND TRAFFIC CONTROL SIGNS FOR CONSTRUCTION AND MAINTENANCE WORK ZONES.
 3. IN ADDITION TO THE GUIDELINES PROVIDED BY THE ABOVE REFERENCED MANUAL, OF THE CALIFORNIA STANDARD PLANS 2015 EDITION SHALL BE USED IN SITUATION PLACED BY THE TRAFFIC CONTROL DETAIL DESCRIBED IN SHEET NO. 15-9 THROUGH 15-17.
 4. CHANNELIZATION TYPE SHALL CONFORM TO CALTRANS TRAFFIC MANUAL SECTION 8-71, FIGURE 8-48, CONSISTENT WITH FIELD CONDITIONS DURING CONSTRUCTION.
 5. CONTRACTOR SHALL REMOVE AND SALVAGE ALL EXISTING CONFLICTING SIGNS, PAVERS MARKERS AND HYDROBLAST ALL CONFLICTING EXISTING STRIPING AND PAVEMENT MARKINGS.
 6. ALL MARKINGS AND STRIPING SHALL BE PAINTED AND WITH EMBEDDED GLASS BEADS PER CALTRANS 2015 EDITION STD. SPEC. SEC. 804-2.03.

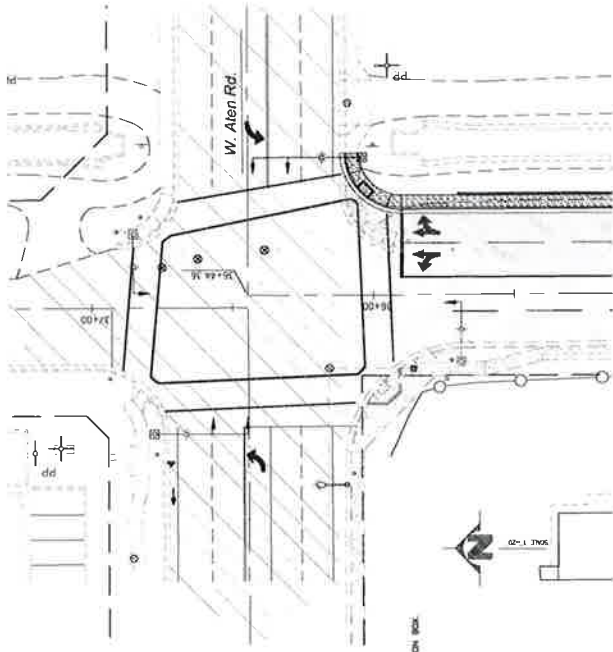


<p>UNDERGROUND SERVICE ALERT CALL TOLL FREE 811 TWO WORKING DAYS BEFORE YOU DIG</p>	<p>APPROVED BY ACTING CITY ENGINEER CITY OF IMPERIAL, CA</p>	<p>ENGINEER OF RECORD PLANS PREPARED UNDER THE SUPERVISION OF</p>	<p>CITY OF IMPERIAL IMPROVEMENT PLANS STRIPING & SIGNAGE PLAN</p>	<p>SHEET 6 OF 11 SHEETS</p>
<p>DATE: _____ BY: _____</p>	<p>DATE: _____ BY: _____</p>	<p>DATE: _____ BY: _____</p>	<p>DATE: _____ BY: _____</p>	<p>DATE: _____ BY: _____</p>
<p>REVISIONS</p>	<p>SCALE</p>	<p>SEAL</p>	<p>PROJECT NO. TO IMPERIAL CO.</p>	<p>PROJECT NO. TO IMPERIAL CO.</p>
<p>REVISIONS</p>	<p>SCALE</p>	<p>SEAL</p>	<p>PROJECT NO. TO IMPERIAL CO.</p>	<p>PROJECT NO. TO IMPERIAL CO.</p>
<p>REVISIONS</p>	<p>SCALE</p>	<p>SEAL</p>	<p>PROJECT NO. TO IMPERIAL CO.</p>	<p>PROJECT NO. TO IMPERIAL CO.</p>
<p>REVISIONS</p>	<p>SCALE</p>	<p>SEAL</p>	<p>PROJECT NO. TO IMPERIAL CO.</p>	<p>PROJECT NO. TO IMPERIAL CO.</p>
<p>REVISIONS</p>	<p>SCALE</p>	<p>SEAL</p>	<p>PROJECT NO. TO IMPERIAL CO.</p>	<p>PROJECT NO. TO IMPERIAL CO.</p>
<p>REVISIONS</p>	<p>SCALE</p>	<p>SEAL</p>	<p>PROJECT NO. TO IMPERIAL CO.</p>	<p>PROJECT NO. TO IMPERIAL CO.</p>
<p>REVISIONS</p>	<p>SCALE</p>	<p>SEAL</p>	<p>PROJECT NO. TO IMPERIAL CO.</p>	<p>PROJECT NO. TO IMPERIAL CO.</p>
<p>REVISIONS</p>	<p>SCALE</p>	<p>SEAL</p>	<p>PROJECT NO. TO IMPERIAL CO.</p>	<p>PROJECT NO. TO IMPERIAL CO.</p>
<p>REVISIONS</p>	<p>SCALE</p>	<p>SEAL</p>	<p>PROJECT NO. TO IMPERIAL CO.</p>	<p>PROJECT NO. TO IMPERIAL CO.</p>
<p>REVISIONS</p>	<p>SCALE</p>	<p>SEAL</p>	<p>PROJECT NO. TO IMPERIAL CO.</p>	<p>PROJECT NO. TO IMPERIAL CO.</p>
<p>REVISIONS</p>	<p>SCALE</p>	<p>SEAL</p>	<p>PROJECT NO. TO IMPERIAL CO.</p>	<p>PROJECT NO. TO IMPERIAL CO.</p>
<p>REVISIONS</p>	<p>SCALE</p>	<p>SEAL</p>	<p>PROJECT NO. TO IMPERIAL CO.</p>	<p>PROJECT NO. TO IMPERIAL CO.</p>
<p>REVISIONS</p>	<p>SCALE</p>	<p>SEAL</p>	<p>PROJECT NO. TO IMPERIAL CO.</p>	<p>PROJECT NO. TO IMPERIAL CO.</p>
<p>REVISIONS</p>	<p>SCALE</p>	<p>SEAL</p>	<p>PROJECT NO. TO IMPERIAL CO.</p>	<p>PROJECT NO. TO IMPERIAL CO.</p>
<p>REVISIONS</p>	<p>SCALE</p>	<p>SEAL</p>	<p>PROJECT NO. TO IMPERIAL CO.</p>	<p>PROJECT NO. TO IMPERIAL CO.</p>
<p>REVISIONS</p>	<p>SCALE</p>	<p>SEAL</p>	<p>PROJECT NO. TO IMPERIAL CO.</p>	<p>PROJECT NO. TO IMPERIAL CO.</p>
<p>REVISIONS</p>	<p>SCALE</p>	<p>SEAL</p>	<p>PROJECT NO. TO IMPERIAL CO.</p>	<p>PROJECT NO. TO IMPERIAL CO.</p>
<p>REVISIONS</p>	<p>SCALE</p>	<p>SEAL</p>	<p>PROJECT NO. TO IMPERIAL CO.</p>	<p>PROJECT NO. TO IMPERIAL CO.</p>
<p>REVISIONS</p>	<p>SCALE</p>	<p>SEAL</p>	<p>PROJECT NO. TO IMPERIAL CO.</p>	<p>PROJECT NO. TO IMPERIAL CO.</p>
<p>REVISIONS</p>	<p>SCALE</p>	<p>SEAL</p>	<p>PROJECT NO. TO IMPERIAL CO.</p>	<p>PROJECT NO. TO IMPERIAL CO.</p>
<p>REVISIONS</p>	<p>SCALE</p>	<p>SEAL</p>	<p>PROJECT NO. TO IMPERIAL CO.</p>	<p>PROJECT NO. TO IMPERIAL CO.</p>
<p>REVISIONS</p>	<p>SCALE</p>	<p>SEAL</p>	<p>PROJECT NO. TO IMPERIAL CO.</p>	<p>PROJECT NO. TO IMPERIAL CO.</p>
<p>REVISIONS</p>	<p>SCALE</p>	<p>SEAL</p>	<p>PROJECT NO. TO IMPERIAL CO.</p>	<p>PROJECT NO. TO IMPERIAL CO.</p>
<p>REVISIONS</p>	<p>SCALE</p>	<p>SEAL</p>	<p>PROJECT NO. TO IMPERIAL CO.</p>	<p>PROJECT NO. TO IMPERIAL CO.</p>
<p>REVISIONS</p>	<p>SCALE</p>	<p>SEAL</p>	<p>PROJECT NO. TO IMPERIAL CO.</p>	<p>PROJECT NO. TO IMPERIAL CO.</p>
<p>REVISIONS</p>	<p>SCALE</p>	<p>SEAL</p>	<p>PROJECT NO. TO IMPERIAL CO.</p>	<p>PROJECT NO. TO IMPERIAL CO.</p>
<p>REVISIONS</p>	<p>SCALE</p>	<p>SEAL</p>	<p>PROJECT NO. TO IMPERIAL CO.</p>	<p>PROJECT NO. TO IMPERIAL CO.</p>
<p>REVISIONS</p>	<p>SCALE</p>	<p>SEAL</p>	<p>PROJECT NO. TO IMPERIAL CO.</p>	<p>PROJECT NO. TO IMPERIAL CO.</p>
<p>REVISIONS</p>	<p>SCALE</p>	<p>SEAL</p>	<p>PROJECT NO. TO IMPERIAL CO.</p>	<p>PROJECT NO. TO IMPERIAL CO.</p>
<p>REVISIONS</p>	<p>SCALE</p>	<p>SEAL</p>	<p>PROJECT NO. TO IMPERIAL CO.</p>	<p>PROJECT NO. TO IMPERIAL CO.</p>
<p>REVISIONS</p>	<p>SCALE</p>	<p>SEAL</p>	<p>PROJECT NO. TO IMPERIAL CO.</p>	<p>PROJECT NO. TO IMPERIAL CO.</p>
<p>REVISIONS</p>	<p>SCALE</p>	<p>SEAL</p>	<p>PROJECT NO. TO IMPERIAL CO.</p>	<p>PROJECT NO. TO IMPERIAL CO.</p>
<p>REVISIONS</p>	<p>SCALE</p>	<p>SEAL</p>	<p>PROJECT NO. TO IMPERIAL CO.</p>	<p>PROJECT NO. TO IMPERIAL CO.</p>
<p>REVISIONS</p>	<p>SCALE</p>	<p>SEAL</p>	<p>PROJECT NO. TO IMPERIAL CO.</p>	<p>PROJECT NO. TO IMPERIAL CO.</p>
<p>REVISIONS</p>	<p>SCALE</p>	<p>SEAL</p>	<p>PROJECT NO. TO IMPERIAL CO.</p>	<p>PROJECT NO. TO IMPERIAL CO.</p>
<p>REVISIONS</p>	<p>SCALE</p>	<p>SEAL</p>	<p>PROJECT NO. TO IMPERIAL CO.</p>	<p>PROJECT NO. TO IMPERIAL CO.</p>
<p>REVISIONS</p>	<p>SCALE</p>	<p>SEAL</p>	<p>PROJECT NO. TO IMPERIAL CO.</p>	<p>PROJECT NO. TO IMPERIAL CO.</p>
<p>REVISIONS</p>	<p>SCALE</p>	<p>SEAL</p>	<p>PROJECT NO. TO IMPERIAL CO.</p>	<p>PROJECT NO. TO IMPERIAL CO.</p>
<p>REVISIONS</p>	<p>SCALE</p>	<p>SEAL</p>	<p>PROJECT NO. TO IMPERIAL CO.</p>	<p>PROJECT NO. TO IMPERIAL CO.</p>
<p>REVISIONS</p>	<p>SCALE</p>	<p>SEAL</p>	<p>PROJECT NO. TO IMPERIAL CO.</p>	<p>PROJECT NO. TO IMPERIAL CO.</p>
<p>REVISIONS</p>	<p>SCALE</p>	<p>SEAL</p>	<p>PROJECT NO. TO IMPERIAL CO.</p>	<p>PROJECT NO. TO IMPERIAL CO.</p>
<p>REVISIONS</p>	<p>SCALE</p>	<p>SEAL</p>	<p>PROJECT NO. TO IMPERIAL CO.</p>	<p>PROJECT NO. TO IMPERIAL CO.</p>
<p>REVISIONS</p>	<p>SCALE</p>	<p>SEAL</p>	<p>PROJECT NO. TO IMPERIAL CO.</p>	<p>PROJECT NO. TO IMPERIAL CO.</p>
<p>REVISIONS</p>	<p>SCALE</p>	<p>SEAL</p>	<p>PROJECT NO. TO IMPERIAL CO.</p>	<p>PROJECT NO. TO IMPERIAL CO.</p>
<p>REVISIONS</p>	<p>SCALE</p>	<p>SEAL</p>	<p>PROJECT NO. TO IMPERIAL CO.</p>	<p>PROJECT NO. TO IMPERIAL CO.</p>
<p>REVISIONS</p>	<p>SCALE</p>	<p>SEAL</p>	<p>PROJECT NO. TO IMPERIAL CO.</p>	<p>PROJECT NO. TO IMPERIAL CO.</p>
<p>REVISIONS</p>	<p>SCALE</p>	<p>SEAL</p>	<p>PROJECT NO. TO IMPERIAL CO.</p>	<p>PROJECT NO. TO IMPERIAL CO.</p>
<p>REVISIONS</p>	<p>SCALE</p>	<p>SEAL</p>	<p>PROJECT NO. TO IMPERIAL CO.</p>	<p>PROJECT NO. TO IMPERIAL CO.</p>
<p>REVISIONS</p>	<p>SCALE</p>	<p>SEAL</p>	<p>PROJECT NO. TO IMPERIAL CO.</p>	<p>PROJECT NO. TO IMPERIAL CO.</p>
<p>REVISIONS</p>	<p>SCALE</p>	<p>SEAL</p>	<p>PROJECT NO. TO IMPERIAL CO.</p>	<p>PROJECT NO. TO IMPERIAL CO.</p>
<p>REVISIONS</p>	<p>SCALE</p>	<p>SEAL</p>	<p>PROJECT NO. TO IMPERIAL CO.</p>	<p>PROJECT NO. TO IMPERIAL CO.</p>
<p>REVISIONS</p>	<p>SCALE</p>	<p>SEAL</p>	<p>PROJECT NO. TO IMPERIAL CO.</p>	<p>PROJECT NO. TO IMPERIAL CO.</p>
<p>REVISIONS</p>	<p>SCALE</p>	<p>SEAL</p>	<p>PROJECT NO. TO IMPERIAL CO.</p>	<p>PROJECT NO. TO IMPERIAL CO.</p>
<p>REVISIONS</p>	<p>SCALE</p>	<p>SEAL</p>	<p>PROJECT NO. TO IMPERIAL CO.</p>	<p>PROJECT NO. TO IMPERIAL CO.</p>
<p>REVISIONS</p>	<p>SCALE</p>	<p>SEAL</p>	<p>PROJECT NO. TO IMPERIAL CO.</p>	<p>PROJECT NO. TO IMPERIAL CO.</p>
<p>REVISIONS</p>	<p>SCALE</p>	<p>SEAL</p>	<p>PROJECT NO. TO IMPERIAL CO.</p>	<p>PROJECT NO. TO IMPERIAL CO.</p>
<p>REVISIONS</p>	<p>SCALE</p>	<p>SEAL</p>	<p>PROJECT NO. TO IMPERIAL CO.</p>	<p>PROJECT NO. TO IMPERIAL CO.</p>
<p>REVISIONS</p>	<p>SCALE</p>	<p>SEAL</p>	<p>PROJECT NO. TO IMPERIAL CO.</p>	<p>PROJECT NO. TO IMPERIAL CO.</p>
<p>REVISIONS</p>	<p>SCALE</p>	<p>SEAL</p>	<p>PROJECT NO. TO IMPERIAL CO.</p>	<p>PROJECT NO. TO IMPERIAL CO.</p>
<p>REVISIONS</p>	<p>SCALE</p>	<p>SEAL</p>	<p>PROJECT NO. TO IMPERIAL CO.</p>	<p>PROJECT NO. TO IMPERIAL CO.</p>
<p>REVISIONS</p>	<p>SCALE</p>	<p>SEAL</p>	<p>PROJECT NO. TO IMPERIAL CO.</p>	<p>PROJECT NO. TO IMPERIAL CO.</p>
<p>REVISIONS</p>	<p>SCALE</p>	<p>SEAL</p>	<p>PROJECT NO. TO IMPERIAL CO.</p>	<p>PROJECT NO. TO IMPERIAL CO.</p>
<p>REVISIONS</p>	<p>SCALE</p>	<p>SEAL</p>	<p>PROJECT NO. TO IMPERIAL CO.</p>	<p>PROJECT NO. TO IMPERIAL CO.</p>
<p>REVISIONS</p>	<p>SCALE</p>	<p>SEAL</p>	<p>PROJECT NO. TO IMPERIAL CO.</p>	<p>PROJECT NO. TO IMPERIAL CO.</p>
<p>REVISIONS</p>	<p>SCALE</p>	<p>SEAL</p>	<p>PROJECT NO. TO IMPERIAL CO.</p>	<p>PROJECT NO. TO IMPERIAL CO.</p>
<p>REVISIONS</p>	<p>SCALE</p>	<p>SEAL</p>	<p>PROJECT NO. TO IMPERIAL CO.</p>	<p>PROJECT NO. TO IMPERIAL CO.</p>
<p>REVISIONS</p>	<p>SCALE</p>	<p>SEAL</p>	<p>PROJECT NO. TO IMPERIAL CO.</p>	<p>PROJECT NO. TO IMPERIAL CO.</p>
<p>REVISIONS</p>	<p>SCALE</p>	<p>SEAL</p>	<p>PROJECT NO. TO IMPERIAL CO.</p>	<p>PROJECT NO. TO IMPERIAL CO.</p>
<p>REVISIONS</p>	<p>SCALE</p>	<p>SEAL</p>	<p>PROJECT NO. TO IMPERIAL CO.</p>	<p>PROJECT NO. TO IMPERIAL CO.</p>
<p>REVISIONS</p>	<p>SCALE</p>	<p>SEAL</p>	<p>PROJECT NO. TO IMPERIAL CO.</p>	<p>PROJECT NO. TO IMPERIAL CO.</p>
<p>REVISIONS</p>	<p>SCALE</p>	<p>SEAL</p>	<p>PROJECT NO. TO IMPERIAL CO.</p>	<p>PROJECT NO. TO IMPERIAL CO.</p>
<p>REVISIONS</p>	<p>SCALE</p>	<p>SEAL</p>	<p>PROJECT NO. TO IMPERIAL CO.</p>	<p>PROJECT NO. TO IMPERIAL CO.</p>
<p>REVISIONS</p>	<p>SCALE</p>	<p>SEAL</p>	<p>PROJECT NO. TO IMPERIAL CO.</p>	<p>PROJECT NO. TO IMPERIAL CO.</p>
<p>REVISIONS</p>	<p>SCALE</p>	<p>SEAL</p>	<p>PROJECT NO. TO IMPERIAL CO.</p>	<p>PROJECT NO. TO IMPERIAL CO.</p>
<p>REVISIONS</p>	<p>SCALE</p>	<p>SEAL</p>	<p>PROJECT NO. TO IMPERIAL CO.</p>	<p>PROJECT NO. TO IMPERIAL CO.</p>
<p>REVISIONS</p>	<p>SCALE</p>	<p>SEAL</p>	<p>PROJECT NO. TO IMPERIAL CO.</p>	<p>PROJECT NO. TO IMPERIAL CO.</p>
<p>REVISIONS</p>	<p>SCALE</p>	<p>SEAL</p>	<p>PROJECT NO. TO IMPERIAL CO.</p>	<p>PROJECT NO. TO IMPERIAL CO.</p>
<p>REVISIONS</p>	<p>SCALE</p>	<p>SEAL</p>	<p>PROJECT NO. TO IMPERIAL CO.</p>	<p>PROJECT NO. TO IMPERIAL CO.</p>
<p>REVISIONS</p>	<p>SCALE</p>	<p>SEAL</p>	<p>PROJECT NO. TO IMPERIAL CO.</p>	<p>PROJECT NO. TO IMPERIAL CO.</p>
<p>REVISIONS</p>	<p>SCALE</p>	<p>SEAL</p>	<p>PROJECT NO. TO IMPERIAL CO.</p>	<p>PROJECT NO. TO IMPERIAL CO.</p>
<p>REVISIONS</p>	<p>SCALE</p>	<p>SEAL</p>	<p>PROJECT NO. TO IMPERIAL CO.</p>	<p>PROJECT NO. TO IMPERIAL CO.</p>
<p>REVISIONS</p>	<p>SCALE</p>	<p>SEAL</p>	<p>PROJECT NO. TO IMPERIAL CO.</p>	<p>PROJECT NO. TO IMPERIAL CO.</p>
<p>REVISIONS</p>	<p>SCALE</p>	<p>SEAL</p>	<p>PROJECT NO. TO IMPERIAL CO.</p>	<p>PROJECT NO. TO IMPERIAL CO.</p>
<p>REVISIONS</p>	<p>SCALE</p>	<p>SEAL</p>	<p>PROJECT NO. TO IMPERIAL CO.</p>	<p>PROJECT NO. TO IMPERIAL CO.</p>
<p>REVISIONS</p>	<p>SCALE</p>	<p>SEAL</p>	<p>PROJECT NO. TO IMPERIAL CO.</p>	<p>PROJECT NO. TO IMPERIAL CO.</p>
<p>REVISIONS</p>	<p>SCALE</p>	<p>SEAL</p>	<p>PROJECT NO. TO IMPERIAL CO.</p>	<p>PROJECT NO. TO IMPERIAL CO.</p>
<p>REVISIONS</p>	<p>SCALE</p>	<p>SEAL</p>	<p>PROJECT NO. TO IMPERIAL CO.</p>	<p>PROJECT NO. TO IMPERIAL CO.</p>
<p>REVISIONS</p>	<p>SCALE</p>	<p>SEAL</p>	<p>PROJECT NO. TO IMPERIAL CO.</p>	<p>PROJECT NO. TO IMPERIAL CO.</p>

EXHIBIT 1

TRAFFIC SIGNAL CONTROLLER				ALK CONTROL				REMARKS		LOCATION
CABINET	TYPE	CONTROLLER	TRAFFIC CONTROLLER	TYPE	SIZE	SIGNAL WTL.	SPECIAL REQUIREMENTS	REMARKS	LOCATION	
①	16-2-80(E)	20(E)	MAS (E)	MAS (E)	SV-2T	SV-2T	***	RELOCATE EXISTING POLE TO STATIONARY POSITION	STA. 52+28.825 LEFT POLE BASE ELEV. 847.70	
②	26-40(E)	41(E)	MAS (E)	MAS (E)	SV-2T	SV-2T	***	RELOCATE EXISTING POLE TO OPTIMUM	STA. 51+24.66 RIGHT POLE BASE ELEV. 847.00	
③	16-2-40	20	MAS (E)	MAS (E)	SV-2T	SV-2T	***	NEW & REM. SIGN ON POLE	STA. 51+25.20 SV-2T RIGHT POLE BASE ELEV. 848.00	
④	24-3-20	20	MAS (E)	MAS (E)	SV-2T	SV-2T	***	NEW & REM. SIGN ON POLE	STA. 52+07.135 SV-2T RIGHT POLE BASE ELEV. 848.00	

(E) - EXISTING
R - NEW
N - NEW
S - NEW



CONSTRUCTION NOTES:

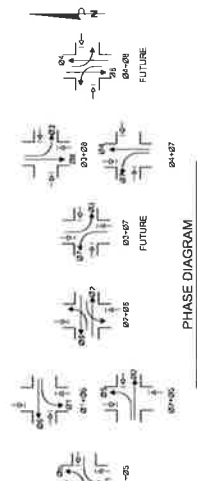
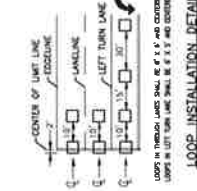
- RELOCATE EXISTING TRAFFIC SIGNAL & MODIFY AS SHOWN
- RELOCATE EXISTING TRAFFIC SIGNAL
- REMOVE & SALVAGE EXISTING TRAFFIC SIGNAL
- REMOVE & SALVAGE EXISTING POLE SIGN
- INSTALL TRAFFIC POLE PER EXISTING CONDUIT, ADD 1" O.D. TO JUNCTION BOX

LEGEND:

- EXISTING LOOP DETECTOR
- PROPOSED LOOP DETECTOR
- EXISTING TRAFFIC POLE SIGN
- PROPOSED TRAFFIC POLE SIGN
- EXISTING CONDUIT
- PROPOSED CONDUIT

GENERAL SIGNAL NOTES

- ALL MATERIAL AND INSTALLATION SHALL CONFORM TO THE STATE OF CALIFORNIA DEPARTMENT OF TRANSPORTATION (CALTRANS) STANDARD SPECIFICATIONS LATEST EDITION AND STANDARD PLANS, LATEST EDITION.
- CONTRACTOR TO COORDINATE WITH CITY OF IMPERIAL, TRAFFIC OPERATIONS SUPERVISOR.
- SEE STIPEND PLAN TO VERIFY ACTUAL LANE DIMENSIONS AND STOP BAR LOCATIONS.
- ALL SIGNAL HEADS AND MOUNTS SHALL BE METAL.
- ALL LENSES SHALL BE 12" GLASS.
- LUMINAIRE SHALL BE 200 WATT, 240 VOLT, IES.
- ALL SIGNALS AND CONDUITS MUST BE AS LOCATED, NOT BE RELOCATED AND SPECIFIED BY THE ENGINEER.
- POLE BASE ELEVATION SHALL BE APPROXIMATELY THE SAME ELEVATION AS THE TOP OF CURB OR AT SIDEWALK GRADE.



CONDUIT AND CONDUCTOR SCHEDULE	
CONDUIT RUN NUMBER	CONDUIT SIZE IN INCHES
1	1.5
2	1.5
3	1.5
4	1.5
5	1.5
6	1.5
7	1.5
8	1.5
9	1.5
10	1.5
11	1.5
12	1.5
13	1.5
14	1.5
15	1.5
16	1.5
17	1.5
18	1.5
19	1.5
20	1.5
21	1.5
22	1.5
23	1.5
24	1.5
25	1.5
26	1.5
27	1.5
28	1.5
29	1.5
30	1.5
31	1.5
32	1.5
33	1.5
34	1.5
35	1.5
36	1.5
37	1.5
38	1.5
39	1.5
40	1.5
41	1.5
42	1.5
43	1.5
44	1.5
45	1.5
46	1.5
47	1.5
48	1.5
49	1.5
50	1.5
51	1.5
52	1.5
53	1.5
54	1.5
55	1.5
56	1.5
57	1.5
58	1.5
59	1.5
60	1.5
61	1.5
62	1.5
63	1.5
64	1.5
65	1.5
66	1.5
67	1.5
68	1.5
69	1.5
70	1.5
71	1.5
72	1.5
73	1.5
74	1.5
75	1.5
76	1.5
77	1.5
78	1.5
79	1.5
80	1.5
81	1.5
82	1.5
83	1.5
84	1.5
85	1.5
86	1.5
87	1.5
88	1.5
89	1.5
90	1.5
91	1.5
92	1.5
93	1.5
94	1.5
95	1.5
96	1.5
97	1.5
98	1.5
99	1.5
100	1.5

UNDERGROUND SERVICE ALERT
CALL TOLL FREE
811
TWO WORKING DAYS
BEFORE YOU DIG

APPROVED BY ACTING CITY ENGINEER
CITY OF IMPERIAL, CA

DATE: _____ DATE: _____
BY: _____ BY: _____

R.C.E. NO.: 55432 R.C.E. NO.: _____

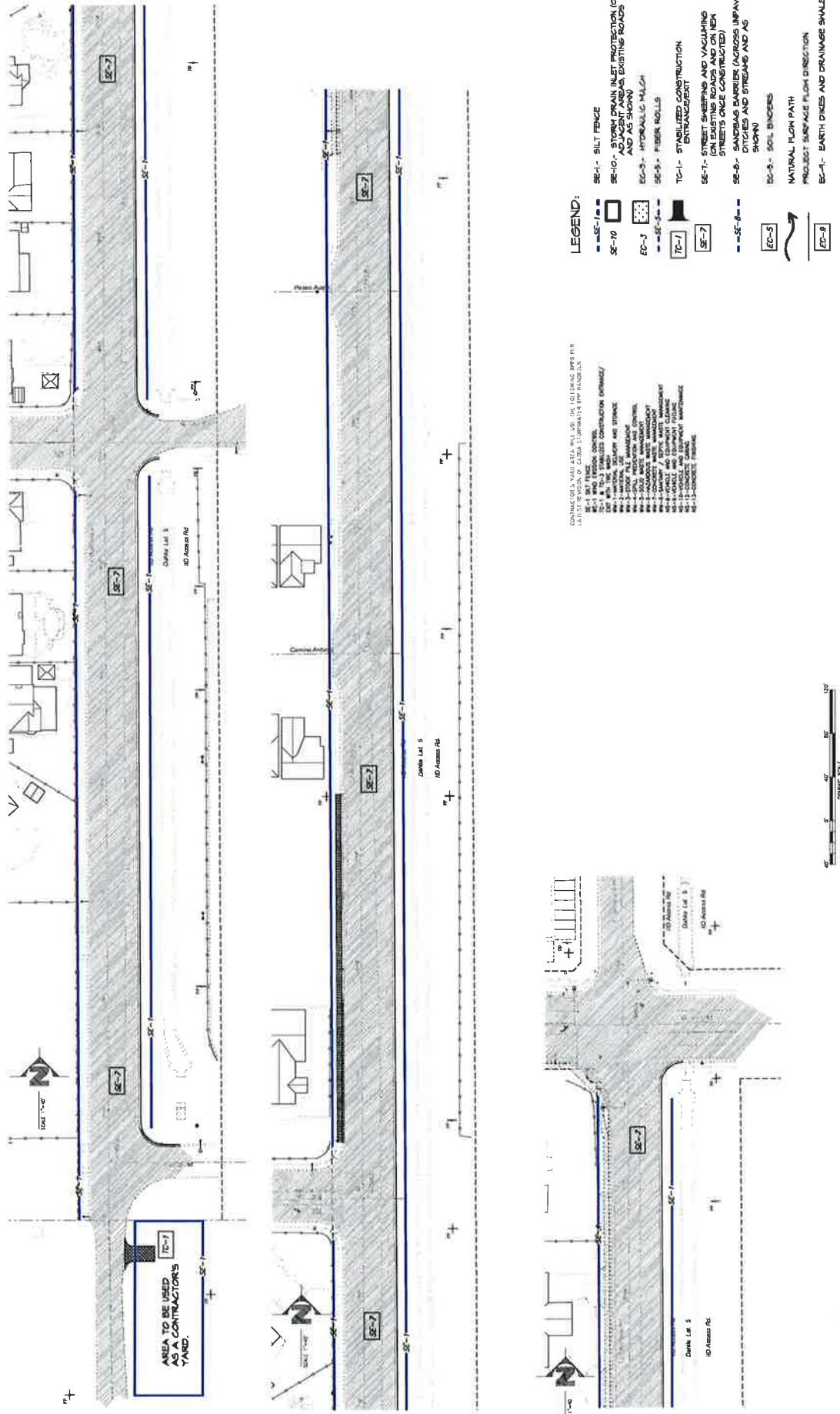
ENGINEER OF RECORD
PLANS PREPARED UNDER THE SUPERVISION OF

BY: CARLOS CORRALES DATE: _____
R.C.E. NO.: 55432

CITY OF IMPERIAL
IMPROVEMENT PLANS
TRAFFIC SIGNAL PLAN
FROM ATTEN. NO. TO THE BIDDING NO.

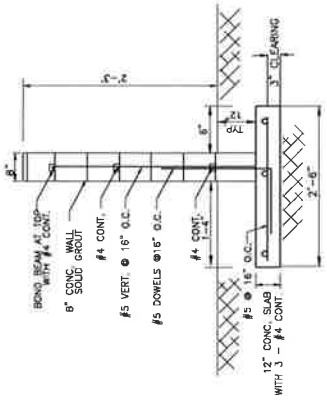
SHEET
7 OF 11 SHEETS
DATE: SEP 09, 2018 BENCHMARK: SEE SHEET NO. 1

EXHIBIT 1

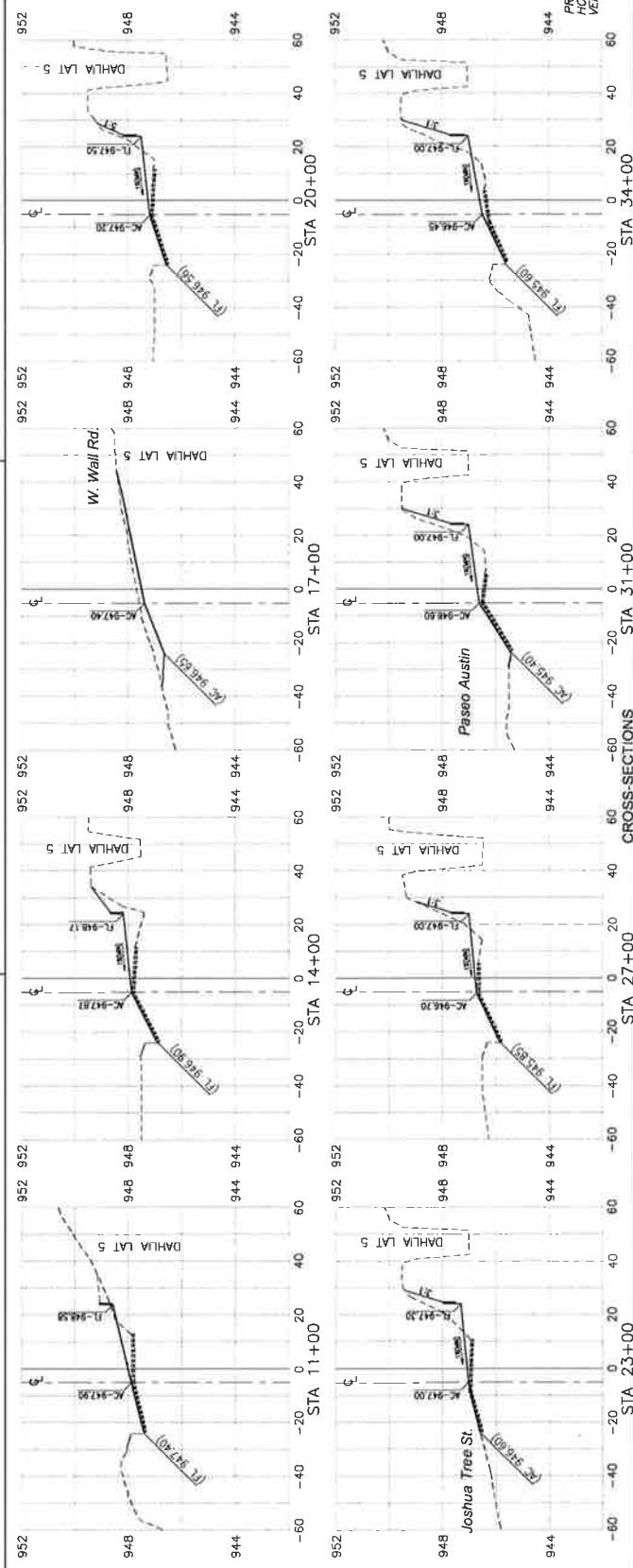
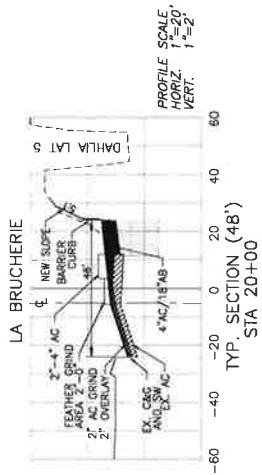


<p>UNDERGROUND SERVICE ALERT CALL TOLL FREE 811 811 BEFORE YOU DIG</p>	<p>APPROVED BY ACTING CITY ENGINEER CITY OF IMPERIAL, CA</p>	<p>ENGINEER OF RECORD PLANS PREPARED UNDER THE SUPERVISION OF</p>	<p>CITY OF IMPERIAL EROSION CONTROL PLAN PROJECT: BAYVIEW TO TRESHILL RD</p>	<p>SHEET 8 OF 11 SHEETS JOB NO. C-19003-00</p>
	<p>DATE: _____ BY: _____ CITY: _____</p>	<p>DATE: _____ BY: _____ R.E.C. NO.: 5843</p>	<p>DATE: _____ BY: _____ R.E.C. NO.: 5843</p>	<p>DATE: _____ BY: _____ BENCHMARK: SEE SHEET NO. 1</p>

EXHIBIT 1



RETAINING WALL DETAIL
NO SCALE



UNDERSTANDING SERVICE ALERT
CALL TOLL FREE 811
NO WORKING DAYS BEFORE YOU DIG

APPROVED BY ACTING CITY ENGINEER
CITY OF IMPERIAL, CA

ENGINEER OF RECORD
PLANS PROVIDED UNDER THE SUPERVISION OF
BY: CHARLES CORRALES DATE: R.C.E. NO.: 55432

SEAL
REGISTERED PROFESSIONAL ENGINEER
CIVIL
STATE OF CALIFORNIA
NO. 52422
EXPIRES 01/31/2018

DATE: SEP 09, 2018 BENCHMARK: SEE SHEET NO. 1

CITY OF IMPERIAL
IMPROVEMENT PLANS
DETAILS & CROSS-SECTIONS
11 SHEETS
C19033.00

Exhibit 2



CITY OF IMPERIAL LaBRUCHERIE RD WIDENING PROJECT FROM ATEN BLVD TO TRESHILL ROAD

March 1, 2019

Item No.	DESCRIPTION	Est. Qty.	Unit	Unit Cost	Total Cost
1	Mobilization, Bonds, General Liability Insurance, Workman's Compensation Insurance, Vehicle Insurance, Taxes, Permits, project signs and Miscellaneous Fees	1	L.S.	\$ 15,000.00	\$ 15,000.00
2	Implement Storm Water Pollution Prevention Plan (SWPPP), Dust Control Program	1	L.S.	\$ 8,000.00	\$ 8,000.00
3	Traffic Control	1	L.S.	\$ 12,000.00	\$ 12,000.00
4	Retaining Wall	2500	L.F.	\$ 400.00	\$ 1,000,000.00
5	Curb & Gutter	2,500	L.F.	\$ 40.00	\$ 100,000.00
6	4.5' PCC Sidewalk	11,250	S.F.	\$ 12.00	\$ 135,000.00
7	12" Subgrade Prep	2,800	C.Y.	\$ 10.00	\$ 28,000.00
7	Furnish, grade and compact Aggregate Class II Base	4,000	TON	\$ 100.00	\$ 400,000.00
9	Installation of 4" AC Pavement	2,000	TON	\$ 200.00	\$ 400,000.00
10	Overlay Existing Asphalt	62,500	S.F.	\$ 3.50	\$ 218,750.00
9	Striping	1	L.S.	\$ 13,000.00	\$ 13,000.00
10	Street Lights	8	EACH	\$ 9,000.00	\$ 72,000.00
11					
12					
13					
14					
15					
16					
17					
18					
19					
20					
				TOTAL =	\$ 2,401,750.00

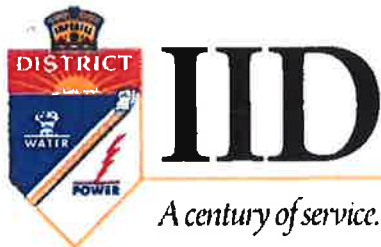


Exhibit 3

www.iid.com

Since 1911

December 3, 2019	BOARD AGENDA MEMORANDUM	Action
-------------------------	--------------------------------	---------------

SUBJECT	IID Proposed 2020 Budget
DEPARTMENT	Executive/Energy/Water/Finance
PRESENTER	Department managers

Background

The proposed operating, capital and staffing budget plans for Energy, Water and Support services were reviewed with the board in public as workshop items during the month of October (October 8, 2019 in El Centro; October 15, 2019 in La Quinta).

There are no anticipated rate increases in 2020.

The 2020 proposed budget includes staffing of 1,418 positions and the departmental details can be found on pages H-13 and H-14.

The draft budget includes new borrowings of \$8 million for electric capital projects, \$16.6 million for the water system as well as new borrowing of \$16.9 million for support services capital.

This was an informational item before the board on November 5, 2019 and November 19, 2019.

Financial Impact

Proposed 2020 operating and capital budgets of \$558,060,900 for Energy Department and \$263,251,700 for Water Department, which include the Support Services operating and capital budgets.

Recommendation

Staff recommends the adoption of the attached resolution approving the 2020 IID proposed budget and staffing plan for the Water, Energy, and Support Services departments.

Additional City Pipeline Projects & Equipment

Project Name & Equipment

- Dahlia Canal Pipeline (City of Imperial)
- North Date Canal Pipeline (City of El Centro)
- Pear 9th Street Pipeline (City of Holtville)
- AAC Hoist Upgrade, 5 Gates
- Dozer, Short-Reach Excavator, Long-Reach Excavator, Water Truck, Dump Truck

- ✓ Additional City Pipeline \$4.3 million
- ✓ Additional Automation \$0.5 million
- ✓ Additional Equipment \$1.5 million



IID

A coalition of service



IID

A century of service.

Exhibit 4

www.iid.com

Since 1911

September 11, 2019

Mr. Stefan T. Chatwin, City Manager
City of Imperial
420 South Imperial Avenue
Imperial, CA 92251

Dear Mr. Chatwin:

Subject: City of Imperial Request for IID Indirect Pipeline Program Fund Inclusion - Dahlia Canal Pipeline, La Brucherie Road, Imperial

This letter is in response to your letter (copy attached) received by email on July 9, 2019 requesting the Dahlia Canal Pipeline project from Treshill Road to Aten Road be placed on the IID's indirect pipeline program fund. The Dahlia Canal in this portion is approximately 2,600 feet long, concrete lined canal several feet above the existing adjacent two-lane La Brucherie Road.

The pipelining request will allow the city to provide full four-lane widening of La Brucherie Road to accommodate sidewalk and bike paths for improved safety, mobility and a healthier community.

It is also understood that long-term interim road improvements are proposed along La Brucherie Road which will require an IID encroachment permit and that both Imperial and IID staff are currently engaged in that separate process.

1. The IID's pipeline indirect fund was established by IID Board resolution in 1990 under an agreement with the MWD to address indirect costs of a 1988 water conservation program. These indirect costs related to the conservation of water included lateral canal pipelining as well as other measures. Subsequent amendments to the original resolution was made and Resolution No. 14-2002 (copy attached) is currently being followed with respect to the indirect pipeline fund. The indirect fund outlines the eligibility of projects and the process by which pipelining projects may be funded, including conformance to IID Regulation No. 51 (copy attached).
2. The Dahlia Canal pipelining proposed is within a developed area and the city is the requesting entity. Under the IID's Regulation No. 51 the pipelining falls under the local public entity project category with a 75 percent indirect pipeline fund of eligible pipelining costs.

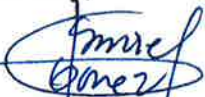
Exhibit 4

The city would therefore have to match 25 percent of these costs and pay 100 percent of the ineligible pipelining costs as outlined in Regulation 51. Typical non-eligible project costs may include import/export of soils, backfill compaction, power line and other utility and encroachment relocation work, and any street repairs.

3. A high-level budget cost to pipeline the Dahlia Canal along the portion from Treshill Road to Aten Road with a 60 inch RGRCP in 2019 dollars is approximately \$1.9 million. A more detailed cost estimate would be provided once actual detailed design is started. A detailed cost estimate would itemize eligible and non-eligible project costs so that the city's share can be determined and payment by the city can be deposited with IID.
4. As requested in your letter, staff is in the process of placing the Dahlia Canal onto the list of projects to be pipelined using the IID's indirect pipeline program fund. IID staff will prepare the documentation needed and present to the IID Board in an upcoming public meeting, tentatively prior to January 2020.
5. The current list of indirect pipeline fund projects have been prioritized by IID Board and the Dahlia Canal pipeline priority would be after the remaining projects are constructed. At this time there are several projects ahead of this one. It may be at least ten years before this project could be ready for funding availability. You will be notified when this item is scheduled for the IID Board of Directors.

If you have any questions, please do not hesitate to contact Claudia Beltran, Engineer, at (760) 339-9003 or by email at cbeltran@iid.com.

Sincerely,



Ismael Gomez, P.E.,
Assistant Manager, Chief Engineer
Engineering Services

FF: cm

cc: Cindy Matejovsky, IID Water Finance Controller
Othon Mora, City of Imperial Community Development Director
Manuel Ortiz, Engineer Principal, Water
Juan Maturino, Engineer Assistant, Water