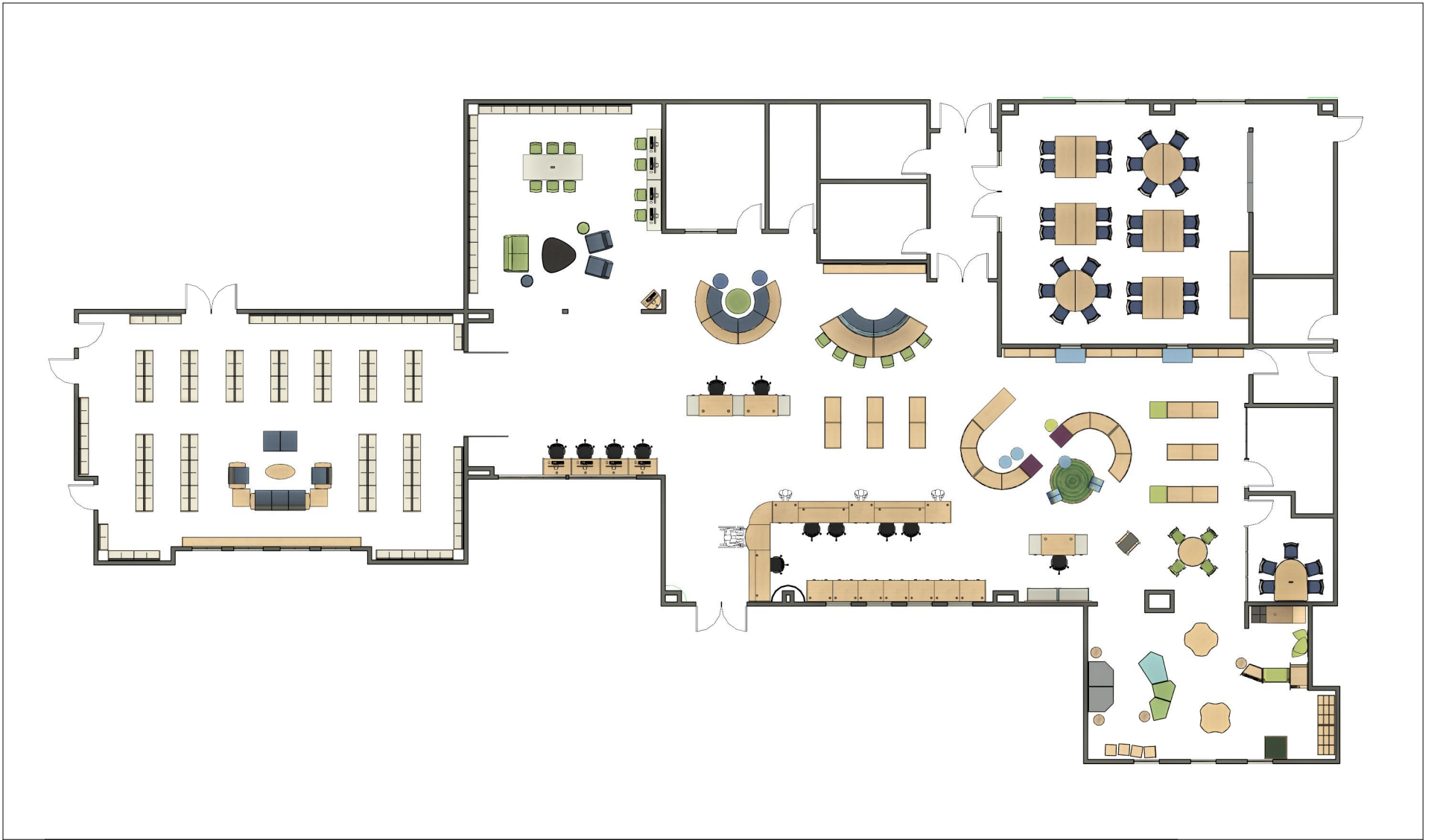


DATE SUBMITTED 2/10/23
 SUBMITTED BY ACM
 DATE ACTION REQUIRED 2/14/23

BOARD ACTION (x)
 PUBLIC HEARING REQUIRED ()
 RESOLUTION ()
 ORDINANCE 1ST READING ()
 ORDINANCE 2ND READING ()
 CITY CLERK'S INITIALS ()

**IMPERIAL PUBLIC LIBRARY BOARD OF TRUSTEES
 AGENDA ITEM**

SUBJECT: DISCUSSION/ACTION: IMPERIAL PUBLIC LIBRARY CIRCULATION DESK DESIGN 1. REVIEW AND COMMENT OF DESIGN FOR CUSTOMER SERVICE COUNTER/CIRCULATION DESK AT THE IMPERIAL PUBLIC LIBRARY. 2. RECOMMENDATION TO PROCEED WITH DESIGN, CONSTRUCTION & INSTALLATION TO THE CITY COUNCIL	
DEPARTMENT INVOLVED: IMPERIAL PUBLIC LIBRARY	
BACKGROUND/SUMMARY: As part of our ongoing operational assessments, staff has made a determination that the current configuration and use of the circulation desk can no longer support the needs and services of residents at the Imperial Public Library. In accordance with the City of Imperial's Development Impact Fee Study – Library Facilities (2010, pg. 34), the use of fees collected for developmental impacts associated with the City's growth would allow for furnishings to be purchased to meet current and future service delivery demands. The Imperial Public Library expansion did not address the current circulation/customer service desk. The proposed design (attached) would allow for four complete workstations, two circulation stations, additional storage, and internal book drop.	
FISCAL IMPACT: NOT TO EXCEED \$70,000.000 If Approved by the City Council	ADMIN SERVICES SIGN INITIALS _____
STAFF RECOMMENDATION:	DEPT. INITIALS _____
MANAGER'S RECOMMENDATION: Management is requesting the Library Board's review and input on the design and functionality of the proposed expanded circulation desk.	CITY MANAGER'S INITIALS _____
MOTION:	
SECONDED: AYES: NAYES: ABSENT:	APPROVED () REJECTED () DISAPPROVED () DEFERRED () REFERRED TO:



IMPERIAL PUBLIC LIBRARY

COMPLEMENTARY DESIGN HOURS
DEMCO HAS PROVIDED TO
SUPPORT YOUR PROJECT

6 HR

© 2019 DEMCO, Inc. All rights reserved

Please be aware that no reliance should be placed on dimensions which have been scaled from this drawing. If you require a full size scale plan, or clarification on a specific dimension or any other detail please contact DEMCO Library Interiors Design Department at 800-747-7561

DLI will rely on certain "Input Material" that you have provided. "Input Material" means all documents, drawings, dimensions, and other materials, and any other data and information provided by you relating to the project.

DLI shall have no liability for any loss, damage, costs, expenses or other claims arising from any input material or instructions supplied that are incomplete, incorrect, inaccurate, illegible, out of sequence or in the wrong form, or arising from their late arrival or non-arrival.

This design is owned by DEMCO Inc. and is protected from unauthorized use, copying and dissemination by copyright laws and by international treaties. Nothing contained in the design or accompanying documents should be construed as granting, by implication, estoppel or otherwise, any license or right to use the design in any manner without the prior written consent of a duly authorized employee of DEMCO, Inc.

Any unauthorized use, reuse, posting, reposting, display, performance, sale, framing, copying, reproduction, modification, publishing, republishing, uploading, downloading, transmitting, distributing, duplicating or any other use of the design is strictly prohibited without the prior written consent of a duly authorized DEMCO, Inc. employee.

FLOOR PLAN

PROJECT NUMBER D3010085

DATE 1/17/2023

DESIGNER EB

SALES REP SL

Scale 1/4" = 1'-0"

1/17/2023 12:03:27 PM



IMPERIAL PUBLIC LIBRARY

COMPLEMENTARY DESIGN HOURS
 DEMCO HAS PROVIDED TO
 SUPPORT YOUR PROJECT

6 HR

© 2019 DEMCO, Inc. All rights reserved

Please be aware that no reliance should be placed on dimensions which have been scaled from this drawing. If you require a full size scale plan, or clarification on a specific dimension or any other detail please contact DEMCO Library Interiors Design Department at 800-747-7561

DLI will rely on certain "Input Material" that you have provided. "Input Material" means all documents, drawings, dimensions, and other materials, and any other data and information provided by you relating to the project.

DLI shall have no liability for any loss, damage, costs, expenses or other claims arising from any input material or instructions supplied that are incomplete, incorrect, inaccurate, illegible, out of sequence or in the wrong form, or arising from their late arrival or non-arrival.

This design is owned by DEMCO Inc. and is protected from unauthorized use, copying and dissemination by copyright laws and by international treaties. Nothing contained in the design or accompanying documents should be construed as granting, by implication, estoppel or otherwise, any license or right to use the design in any manner without the prior written consent of a duly authorized employee of DEMCO, Inc.

Any unauthorized use, reuse, posting, reposting, display, performance, sale, framing, copying, reproduction, modification, publishing, republishing, uploading, downloading, transmitting, distributing, duplicating or any other use of the design is strictly prohibited without the prior written consent of a duly authorized DEMCO, Inc. employee.

**CIRCULATION
 DESK**

PROJECT NUMBER D3010085

DATE 1/17/2023

DESIGNER EB

SALES REP SL

Scale

1/17/2023 12:03:54 PM



IMPERIAL PUBLIC LIBRARY

COMPLEMENTARY DESIGN HOURS
DEMCO HAS PROVIDED TO
SUPPORT YOUR PROJECT

6 HR

© 2017 DEMCO, Inc. All rights reserved

Please be aware that no reliance should be placed on dimensions which have been scaled from this drawing. If you require a full size scale plan, or clarification on a specific dimension or any other detail please contact DEMCO Library Interiors Design Department at 800-747-7561

DLI will rely on certain "Input Material" that you have provided. "Input Material" means all documents, drawings, dimensions, and other materials, and any other data and information provided by you relating to the project.

DLI shall have no liability for any loss, damage, costs, expenses or other claims arising from any input material or instructions supplied that are incomplete, incorrect, inaccurate, repetitive, out of sequence or in the wrong form, or arising from their late arrival or non-arrival.

This design is owned by DEMCO Inc. and is protected from unauthorized use, copying and dissemination by copyright laws and by international treaties. Nothing contained in the design or accompanying documents should be construed as granting, by implication, estoppel or otherwise, any license or right to use the design in any manner without the prior written consent of a duly authorized employee of DEMCO, Inc.

Any unauthorized use, reuse, posting, reposting, display, performance, sale, framing, copying, reproduction, modification, publishing, republishing, uploading, downloading, transmitting, distributing, duplicating or any other use of the design is strictly prohibited without the prior written consent of a duly authorized DEMCO, Inc. employee.

CIRCULATION DESK

PROJECT NUMBER	D3010085
DATE	1/17/2023
DESIGNER	EB
SALES REP	SL

Scale

