



Staff Report

Agenda Item No. D-1

To: Traffic Commission

From: Othon Mora, Community Development Director

Date: January 7, 2025

Subject: Loading Zone for Paratransit Services at Imperial Village Apartments on 11th Street

Background:

The City has received a request from David Aguirre, Executive Director of the Imperial County Transportation Commission (ICTC), to establish a dedicated loading zone to accommodate their paratransit services, specifically IVT Access and IVT Ride. These services provide essential transportation for individuals with disabilities and senior citizens, operating on a demand-response basis without fixed schedules.

Residents of the senior housing complex have expressed concerns regarding the lack of a designated area for passenger pick-up and drop-off. Currently, the complex has parking around the entire building structure, leaving no specific area for this purpose. As a result, paratransit vehicles often have to drop passengers off at locations further away from the complex, posing challenges, especially for wheelchair users who require the use of lifts or ramps for boarding and alighting.

Operational Details:

- Service Hours:
 - *IVT Access:*
 - Monday to Friday: 6:00 AM – 8:00 PM
 - Saturday: 6:00 AM – 8:00 PM
 - Sunday: 7:00 AM – 4:00 PM
 - *IVT Ride:*
 - Monday to Friday: 6:00 AM – 4:00 PM
 - Every other Saturday: 6:00 AM – 4:00 PM
- Vehicle Specifications:
 - Length: Approximately 26 feet
 - Required Space: 40 feet to accommodate parking and safe deployment of rear-mounted wheelchair lifts

Site Assessment:

The proposed loading zone is located on 11th Street, adjacent to the senior housing complex known as Imperial Village, situated at 307 N. Imperial Avenue. The paratransit vehicles servicing this area are equipped with their own ramps or lifts, ensuring safe boarding and alighting for passengers directly from the street. The senior apartment complex itself features ADA-accessible elements, such as handrails and wheelchair ramps, facilitating seamless entry into the property. No additional ADA modifications are required on the street or sidewalk to accommodate the loading

Considerations:

1. Traffic Flow and Parking:
 - The establishment of a 45-foot loading zone may impact existing parking availability.
 - Given the variable nature of service requests, the frequency of use during peak hours is unpredictable.
2. Safety and Accessibility:
 - Ensuring the loading zone is situated in an area with clear visibility for both drivers and pedestrians is crucial.
 - Adequate signage should be installed to inform the public of the loading zone's purpose and restrictions.
3. Compliance with Guidelines:
 - The proposed loading zone should adhere to the standards outlined in the Bus Stop Design and Safety Guideline Handbook provided by the Imperial County Transportation Commission.

Mitigation Measures Options and Cost:

1. Signs and Stripping - \$500

Environmental Compliance

The project is categorically exempt from the California Environmental Quality Act (CEQA) under Section 15301 (Class1)-Existing Facilities

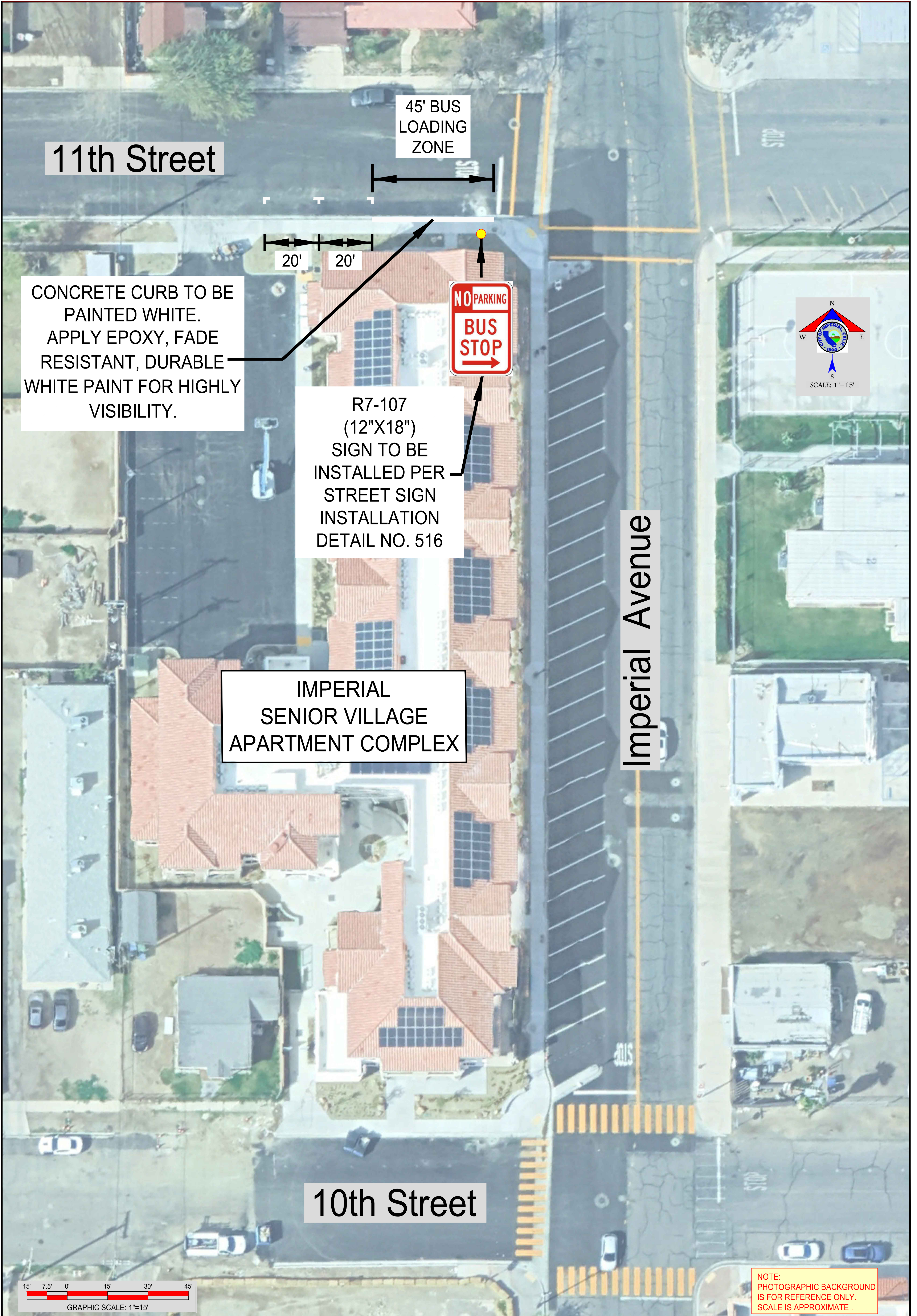
Recommendation:

Staff recommends the approval of the dedicated loading zone for ICTC's paratransit services at the specified location, subject to the following conditions:

- Installation of appropriate signage indicating the loading zone's restrictions and operational hours.

Attachments:

- Exhibit "A"



11th Street

45' BUS
LOADING
ZONE

20' 20'

CONCRETE CURB TO BE
PAINTED WHITE.
APPLY EPOXY, FADE
RESISTANT, DURABLE
WHITE PAINT FOR HIGHLY
VISIBILITY.

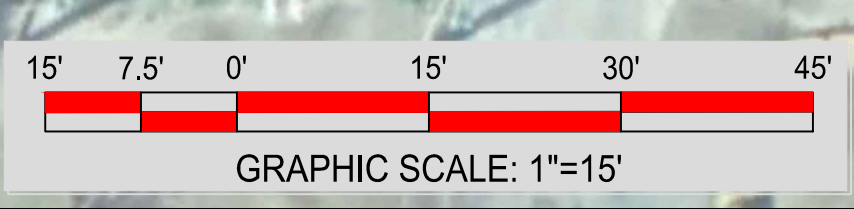
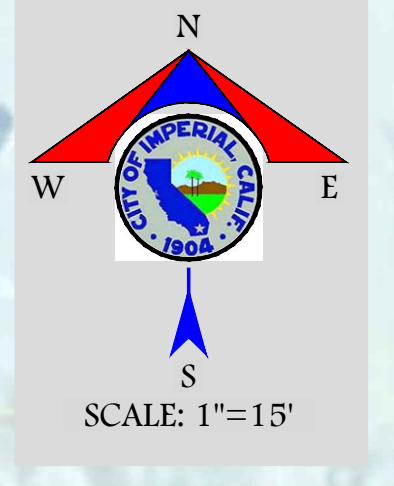


R7-107
(12"X18")
SIGN TO BE
INSTALLED PER
STREET SIGN
INSTALLATION
DETAIL NO. 516

IMPERIAL
SENIOR VILLAGE
APARTMENT COMPLEX

Imperial Avenue

10th Street



NOTE:
PHOTOGRAPHIC BACKGROUND
IS FOR REFERENCE ONLY.
SCALE IS APPROXIMATE.



400 South Imperial Avenue, Suite 101
Imperial, CA 92251
Ph: (760) 355-3840 • Fax: (760)355-4718

EXHIBIT "A"
PARATRANSIT SERVICES
BUS STOP
FOR IVT ACCESS & IVT RIDE

COMMUNITY DEVELOPMENT DEPARTMENT
**IMPERIAL SENIOR VILLAGE
APARTMENT COMPLEX**
Imperial Ave & 11st Intersection
DATE: 01/16/2025

SHEET
1
OF **3** SHEETS